

# Compu-Spread

## Counter Balance Valves CS-CBV



The Rexroth CS-CBV Counterbalance Valve is a leak-free pressure control valve used to safely hold suspended hydraulic loads and prevent undesirable run-away when the load is to be moved. The CS-CBV is for line mounting, preferably right at the actuator it is to control. It incorporates the Rexroth VSBN series cartridge valve. Flow is regulated in one direction by a pilot pressure signal working against the valve's spring setting. Free flow in the opposite direction is permitted by the integral reverse flow check valve.

For maximum effectiveness counterbalance valves should be mounted as close to the actuator as is possible.

A version with two valves in one body can be used where an actuator needs to be controlled in both directions.

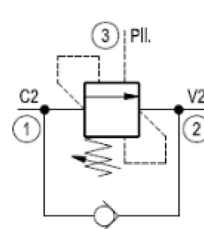
### EFFECTIVE LOAD HOLDING

Safely holds suspended loads and can control over-running loads.

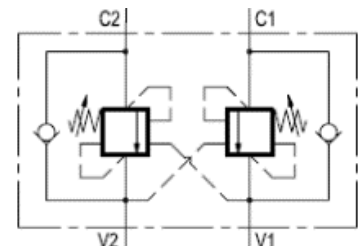
### FEATURES

- Fully adjustable
- Single or Double Cartridge Versions
- Various pilot piston ratios available
- Compact Assembly

### SCHEMATIC



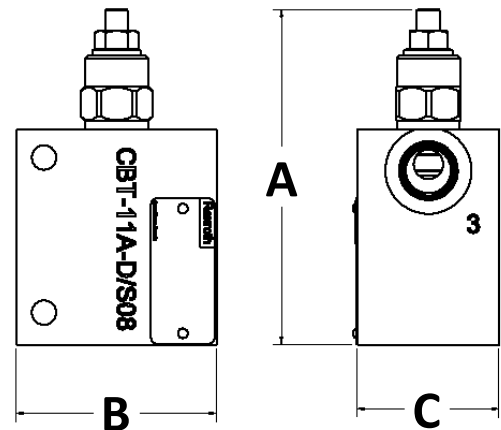
Single Cartridge



Double Cartridge

## OVERALL DIMENSIONS—INCHES (MM)

Material #	A	B	C
R987376849	4.7" (120)	2.4" (60)	2" (50)
R987463485	4.7" (120)	2.8" (70)	2" (50)
R987XXXXX	5.8" (147)	3" (75)	2" (50)
R987464857	5.8" (147)	3" (75)	2" (50)
R987391397	7.6" (194)	3.9" (100)	2.3" (58)
R987404420*	4.7" (120)	3.9" (100)	1.3" (32)
R987492994*	4.7" (120)	3.9" (100)	1.3" (32)



All dimensions are approximate, intended for illustrative purposes only. Certified drawings available upon request.

## ORDERING INFORMATION

Material #	Model Code	Pilot Ratio	Main Ports	Q USGPM (l/min)	Housing Material
R987376849	CS-CBV-08-3:1-1X/345-08UNF	3:1	#08 SAE "O" boss (3/4-16 UNF)	16 (60)	ductile iron
R987463485	CS-CBV-08-8:1-1X/345-08UNF* (1)	8:1	#08 SAE "O" boss (3/4-16 UNF)	16 (60)	ductile iron
Upon request	CS-CBV-12-3:1-1X/345-12UNF	3:1	#12 SAE "O" boss (1-1/16-12 UNF)	32 (120)	ductile iron
R987464857	CS-CBV-12-8:1-1X/345-12UNF*	8:1	#12 SAE "O" boss (1-1/16-12 UNF)	32 (120)	ductile iron
R987391397	CS-CBV-16-4:1-1X/345-16UNF	4:1	#16 SAE "O" boss (1-5/16-12 UNF)	63 (240)	ductile iron
R987404420*	CS-CBVD-08-3:1-1X/345-08UNF	3:1	#08 SAE "O" boss (3/4-16 UNF)	16 (60)	ductile iron
R987492994*	CS-CBVD-08-3:1-1X/345-08UNF	8:1	#08 SAE "O" boss (3/4-16 UNF)	16 (60)	ductile iron

\* Dual Cartridge version

**Bosch Rexroth Canada Corp.**  
 490 Prince Charles Drive S.  
 Welland, ON L3B 5X7  
 Tel: +1 905-735-0510  
 Toll Free: +1 877-COMPU-11  
[www.boschrexroth.ca/cs](http://www.boschrexroth.ca/cs)

© Bosch Rexroth. This document, as well as the information set forth in it, are the exclusive property of Bosch Rexroth; it may not be reproduced or given to third parties without its consent. The data specified only serve to describe the product. No statements concerning a certain condition or suitability for a certain application can be derived from our information. The information given does not release the user from the obligation of own judgment and verification. All products described herein are subject to normal aging and wear from usage. Subject to change