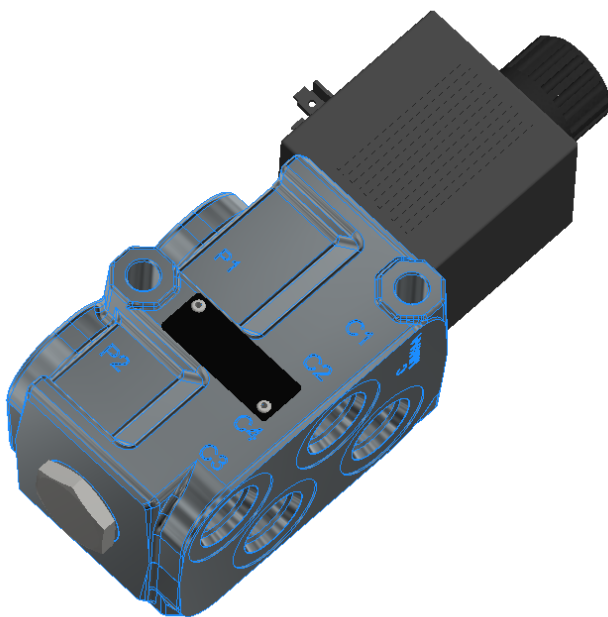


# Compu-Spread

## Diverter Valves CS-DV



The Rexroth CS-DV family of line-mounted spool valves allows unique directional control capabilities for auxiliary and intermittently used diverter or selector functions to be realized.

In a double acting e.g. cylinder, circuit with a main control valve providing direction, flow and possibly pressure control, a 6/2 way CS-DV can allow this regulated flow to be switched between two actuators.

A 3/2 CS-DV can be used to select one of two unidirectional actuators, typically hydraulic motors.

### COMPACT SELECTOR VALVE

Solenoid operated spool type directional control used as a diverter or selector valve in hydraulic circuits.

### FEATURES

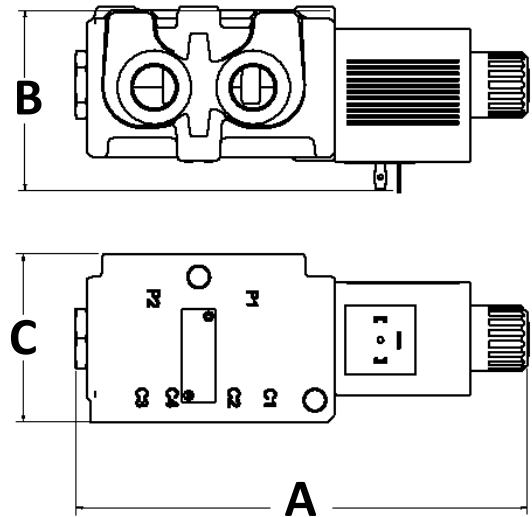
- Line-mounted Directional Control
- Mobile Duty Compact Valve Assembly
- Slip-on Solenoid with IP65 Connector
- Operating pressure 4,500 psi (310 bar)

### SCHEMATIC



## OVERALL DIMENSIONS—IN (MM)

Material #	A	B	C
R930072322	6 (152)	2.9 (73)	2.6 (65)
R930055482	7.5 (191)	3.5 (90)	3.2 (82)
R933000008	7.9 (199)	3 (76)	2.8 (71)
R933000013	8.6 (218)	3.4 (87)	2.6 (66)



All dimensions are approximate, intended for illustrative purposes only. Certified drawings are available upon request.

## ORDERING INFORMATION

Material #	Model Code	Logic	Porting	Q USGPM (l/min)	El. Connector
R930072322	L705C...3A...	3/2	#8 SAE "O" boss (3/4-16 UNF)	15 (60)	C4, 12VDC
R930055482	L706E...3N...	3/2	#12 SAE "O" boss (1-1/16-12 UNF)	37 (140)	C4, 12VDC
R933000008	L725C...6A...	6/2	#8 SAE "O" boss (3/4-16 UNF)	15 (60)	without coil
R933000065	C4803 12DC	—	N/A	—	C4, 12VDC coil for preceding
R933000013	L745D...6B...	6/2	#10 SAE "O" boss (7/8-14 UNF)	23 (90)	without coil
R933000119	C6503 12DC	—	N/A	—	C4, 12VDC coil for preceding

Bosch Rexroth Canada Corp.  
490 Prince Charles Drive S.  
Welland, ON L3B 5X7  
Tel: +1 905-735-0510  
Toll Free: +1 877-COMPU-11  
www.boschrexroth.ca/cs

© Bosch Rexroth. This document, as well as the information set forth in it, are the exclusive property of Bosch Rexroth; it may not be reproduced or given to third parties without its consent. The data specified only serve to describe the product. No statements concerning a certain condition or suitability for a certain application can be derived from our information. The information given does not release the user from the obligation of own judgment and verification. All products described herein are subject to normal aging and wear from usage. Subject to change