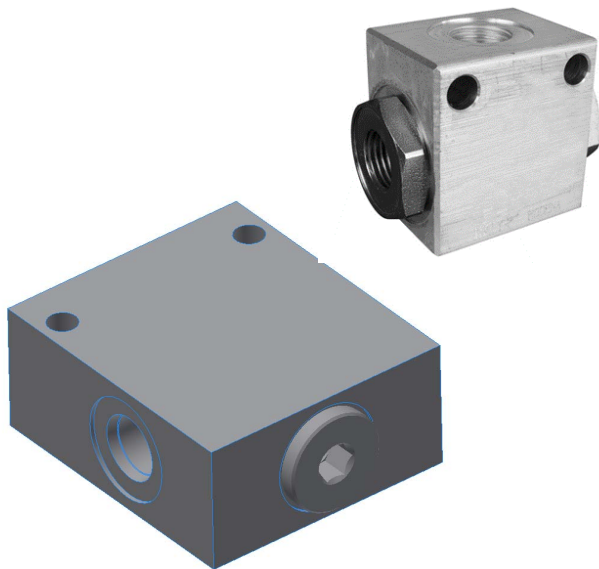


Compu-Spread

Shuttle Valves CS-SV



Rexroth CS-SV shuttle valves can be used as pilot signal load sense elements or to provide hydraulic fluid to a device from two pressure sources. The inherently reliable single ball shuttle delivers the highest of the 2 pressures to the common port. The single ball allows for the decay of the pressure signal when both work ports drop to a lower pressure level.

The CS-SV assembly uses the Rexroth SELB cartridge in a housing. The compact VFC is a parts-in-body design.

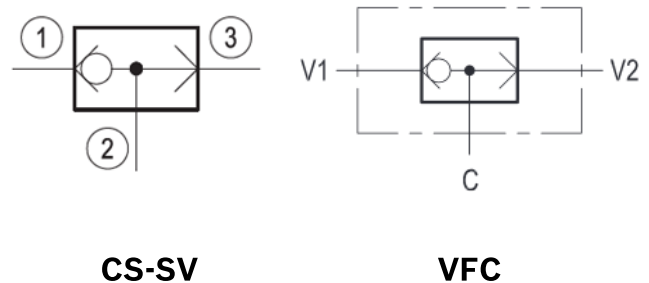
EFFECTIVE LOGIC DEVICE

Shuttle valves are commonly used in hydraulic circuits to provide a load signal to a pilot device.

FEATURES

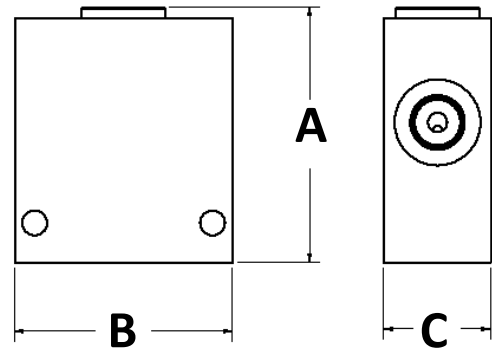
- Simple and reliable
- Compact and lightweight
- 3,000 and 5,000 psi versions

SCHEMATIC



OVERALL DIMENSIONS—INCHES (MM)

Material #	A	B	C
R930002703	2 (50)	1.6 (40)	1.2 (30)
R987486110	2.9 (73)	2.4 (62)	1.2 (30)



All dimensions are approximate, intended for illustrative purposes only. Certified drawings are available upon request.

ORDERING INFORMATION

Material #	Model Code	Q USGPM (l/min)	Pressure (bar)	Porting	Housing Material
R930002703*	VFC-NC-382B	13 (50)	3000 psi (210)	#06 SAE (9/16-18 UNF)	aluminum
R987486110	CS-SV-08- 1X/345-06UNF	2.5 (10)	5000 psi (345)	#06 SAE (9/16-18 UNF)	ductile iron

* denotes C-S standard, replaces R987379496

Bosch Rexroth Canada Corp.
490 Prince Charles Drive S.
Welland, ON L3B 5X7
Tel: +1 905-735-0510
Toll Free: +1 877-COMPU-11
www.boschrexroth.ca/cs

© Bosch Rexroth. This document, as well as the information set forth in it, are the exclusive property of Bosch Rexroth; it may not be reproduced or given to third parties without its consent. The data specified only serve to describe the product. No statements concerning a certain condition or suitability for a certain application can be derived from our information. The information given does not release the user from the obligation of own judgment and verification. All products described herein are subject to normal aging and wear from usage. Subject to change