

Specifications

General	
Maximum operating pressure	3000 psi
Maximum plow lift pressure	50 - 1500 psi
Maximum oil flow into block	6 Gpm or 23
Hydraulic Connections	
Working Ports	1/2" SAE Fittings
Load Sense Port	1/4" SAE Fitting
Inlet Port 1/2"	SAE Fittings
Tank Port 3/4"	SAE Fittings

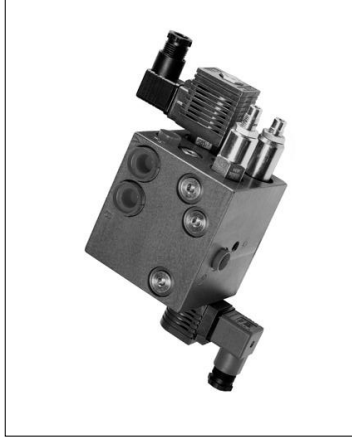
The Power Float block is only designed to work in conjunction with a load sense pump (A10VO).

This assembly must also be used with a valve section containing a cylinder spool configuration.

The Power Float manifold block must be used in conjunction with a Rexroth CS 105 auxiliary controller. Please consult the factory for more details.

Power Float Manifold Block

03.2012

**Electrohydraulic Power Float
 Manifold Block**


The Power Float Manifold is an adjustable manifold assembly, which reduces the effective weight of the plow on the road surface. This assembly significantly reduces the wear of the plow edge and plow shoes, as well as reducing the fuel consumption of the truck by carrying the weight of the plow, as opposed to pushing its full weight along the road surface.

Use of a Power Float assembly also provides additional operating savings outside the truck. By controlling the weight of the plow on the surface of the road, less damage occurs to both the road surface and raised access covers, reducing road maintenance costs.

Through an easy adjustment of the valves on the block, the installing technician can hydraulically balance as little or as much weight off the plow as desired. The valve block is easily adaptable into most hydraulic systems. The manifold should be installed into an enclosure for longevity and corrosion resistance.