

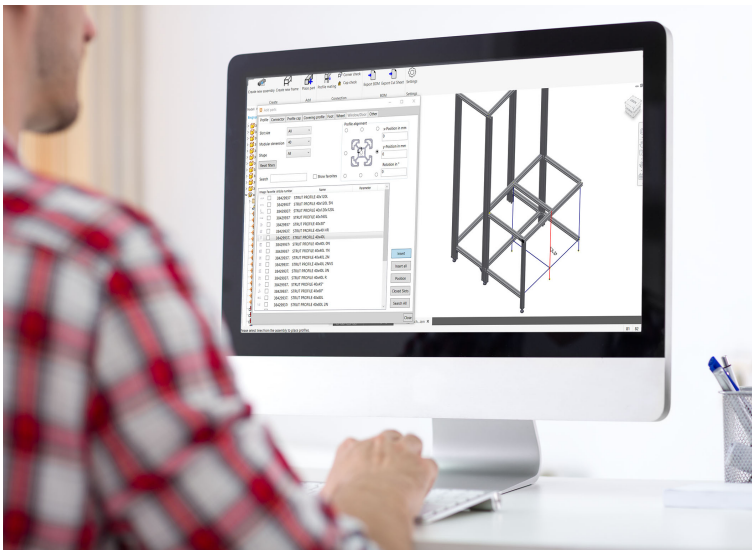
PRESS INFORMATION

FRAMEpro brings Bosch Rexroth's modular profile system into CAD environments

Manuela Kessler | 05.10.2021 | Lohr am Main / Germany | PI 031/21

The intelligent FRAMEpro plug-in allows the seamless construction of machine frames in a familiar CAD environment

- Integration into Autodesk® Inventor and SOLIDWORKS from Dassault
- Time and cost savings thanks to numerous automatisms and functions
- Intelligent macros create exact connections automatically



The intelligent FRAMEpro plug-in integrates basic mechanic elements into CAD environments. (Image source: Bosch Rexroth AG)

With the new FRAMEpro CAD plug-in, Bosch Rexroth allows its proven basic mechanic elements for machine frames and housings to be transferred straight to the CAD environments Autodesk® Inventor and SOLIDWORKS from Dassault. Users of both systems can thus reduce the engineering time and avoid errors owing to media breaks and potential incorrect entries. From now on, automatically set connections and profile configurations, automatic adjustments in the event of changes, intelligent macros and useful functions will save valuable time during planning and construction work using Bosch Rexroth's proven modular aluminum profile system.

FRAMEpro complements the relevant CAD environment by adding a library which is updated by Bosch Rexroth on an ongoing basis. All models and data it contains are therefore up to date at all times. Because CAD data no longer need to be transferred from external sources, manual imports, transmission errors or duplicate data are now a thing of the past.

Automatic connections and intelligent macros

PRESS INFORMATION

Connections established automatically with the help of intelligent macros save time and make life easier for users who no longer need to place components themselves. Profile configuration processes which match the particular connector type are also set automatically. Other special macros make it easier to incorporate panel elements and doors.

Lean processes including ordering

Practical search, sort and filter functions provide additional help for design engineers and planners. The selected profiles are placed in a 3D line model – centrally or with an offset – and can also be rotated. Accessories such as connectors, cover caps, bases and wheels can then be placed on the profiles.

FRAMEpro automatically transfers all components used including profile machining processes to a parts list which can be used to request a quotation or actually place an order with Bosch Rexroth or its partners. Once the construction process is complete, the plug-in also lists the strut profiles used including the necessary sawing and drilling steps.

Automatic adjustment in the event of subsequent changes

If dimensions in the 3D sketch need to be changed later on, FRAMEpro immediately adapts the length of the placed profiles accordingly. Because all other components are connected via placing constraints, they too are automatically adjusted. This saves valuable time and resources. All in all, the intelligent CAD plug-in plays an important role in reducing the time to market and achieving greater competitiveness.

Basic Information Bosch Rexroth

As one of the world's leading suppliers of drive and control technologies, Bosch Rexroth ensures efficient, powerful and safe movement in machines and systems of any size. The company bundles global application experience in the market segments of Mobile Applications, Machinery Applications and Engineering, and Factory Automation. With its intelligent components, customized system solutions and services, Bosch Rexroth is creating the necessary environment for fully connected applications. Bosch Rexroth offers its customers hydraulics, electric drive and control technology, gear technology and linear motion and assembly technology, including software and interfaces to the Internet of Things. With locations in over 80 countries, more than 29,600 associates generated sales revenue of around 5.2 billion euros in 2020.

Basic Information Bosch

The Bosch Group is a leading global supplier of technology and services. It employs roughly 395,000 associates worldwide (as of December 31, 2020). The company generated sales of 71.5 billion euros in 2020. Its operations are divided into four business sectors: Mobility Solutions, Industrial Technology, Consumer Goods, and Energy and Building Technology. As a leading IoT provider, Bosch offers innovative solutions for smart homes, Industry 4.0, and connected mobility. Bosch is pursuing a vision of mobility that is sustainable, safe, and exciting. It uses its expertise in sensor technology, software, and services, as well as its own IoT cloud, to offer its customers connected, cross-domain solutions from a single source. The Bosch Group's strategic objective is to facilitate connected living with products and solutions that either contain artificial

PRESS INFORMATION

intelligence (AI) or have been developed or manufactured with its help. Bosch improves quality of life worldwide with products and services that are innovative and spark enthusiasm. In short, Bosch creates technology that is “Invented for life.” The Bosch Group comprises Robert Bosch GmbH and its roughly 440 subsidiary and regional companies in some 60 countries. Including sales and service partners, Bosch’s global manufacturing, engineering, and sales network covers nearly every country in the world. With its more than 400 locations worldwide, the Bosch Group has been carbon neutral since the first quarter of 2020. The basis for the company’s future growth is its innovative strength. At 129 locations across the globe, Bosch employs some 73,000 associates in research and development, of which nearly 34,000 are software engineers.

Press Contact

Please get in touch with our Press Contact



Manuela Kessler

Spokesperson
technology topics
+49 9352 184145

Manuela.Kessler@boschrexroth.de