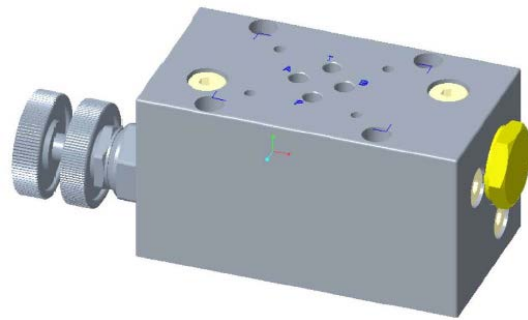
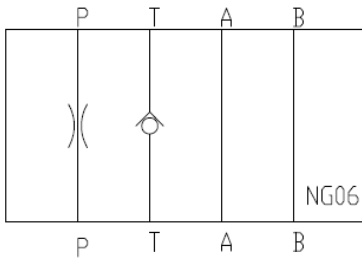


메인터넨스밸브 HJ 시리즈

뛰어난 호환성, 경쟁력 있는 가격, 빠른 납기 !!

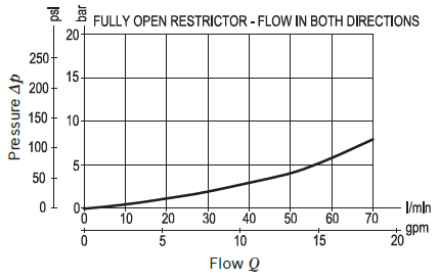


Specifications (기본사양)

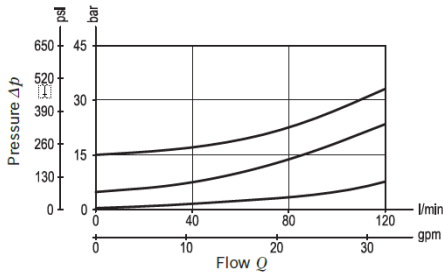
Item:	HJ-06	HJ-10	HJ-16	HJ-25	manufacturer
Max. working pressure (bar):	350	350	350	350	REXROTH
Max. flow (L/min):	70	120	320	600	REXROTH
주문번호:	R987391108	R987391143	R987494787	R987391221	REXROTH

기타 옵션 항목은 별도 문의.

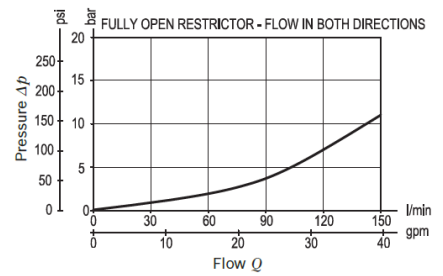
Characteristic curve



Characteristic curve



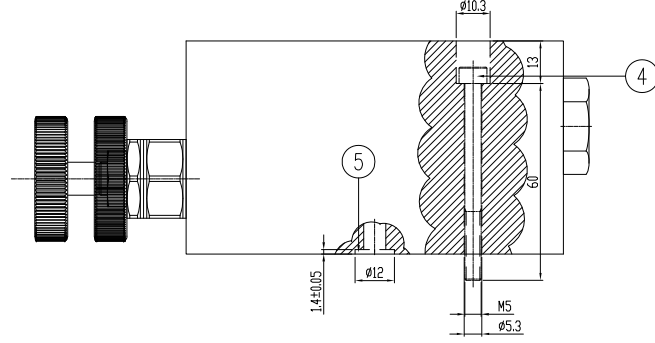
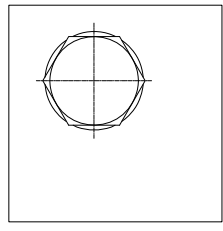
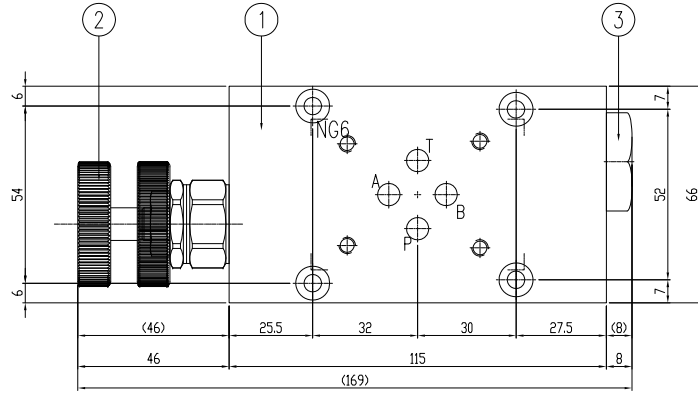
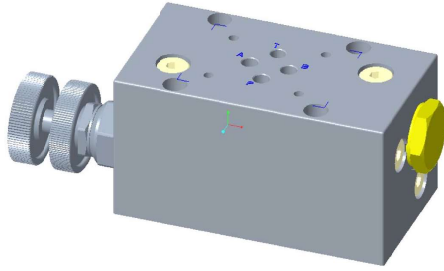
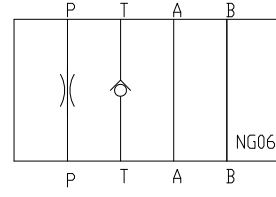
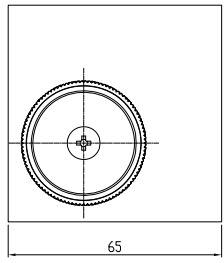
Characteristic curve



디지털 시명자Hyunsik An
 날짜: 2020.06.11 12:22:28
 +09'00'

Diese Unterlage darf weder kopiert noch dritten Personen zugänglich gemacht werden. Schutzvermerk DIN34 beachten.
 This document may not be copied or passed on to a third person. Copyright reserved
 본 도면은 저작권이 복제 또는 전달될 수 없습니다.

NO.	DESCRIPTION	PART NO.	SIZE	수량 QTY	재질 MATERIAL	비고 REMARKS
1	MANIFOLD	R987390771	65x66x115	1	GGG40	3.6kg
2	THROTTLE VALVE	R901109831	ST-C-10	1	-	-
3	CHECK VALVE	R901106596	VUCN-10A	1	-	-
4	WRECH BOLT	-	M5x60L	4	-	-
5	O-RING	-	P9 O-RING	4	NBR	-



- * Throttle valve = ST-C-10 (Rexroth)
 - Maximum flow = 70 L/min.
 - Maximum opening pressure = 350bar
 - Installation torque = 44 - 56 Nm
- * Check valve = VUCN-10A (Rexroth)
 - Maximum flow = 80 L/min.
 - Maximum opening pressure = 350bar
 - Installation torque = 41 - 47 Nm

K/CHKO	H.S.AN	J.H.LEE	XXXXXX
Index	2020.xx.xx	2020.xx.xx	
변경/created	검정/checked	승인/approv.	변경내역 / change note
표준/standard	ISO 1101	ISO 002	표면처리/finishing
표면처리/finishing	KS B ISO 1315	KS B ISO 1101	표면처리/finishing
중량/weight	3.6		
고객/customer	65x66x115	주문서/order no.	
소재/material	GGG40	주문서/order no.	
문서/Document	AG	문서/Document	
설계/Design	2016.05.31	H.S.AN	
검정/checked	2016.06.01	K.H.KO	
승인/approv.	2016.06.02	J.H.LEE	
Index / A	첫번째/First issue		
Document: AG STANDARD NG06 MAINTENANCE BLOCK WITH ST-C-10 & VUCN-10A Industrial Hydraulics 1:1.5		Part No: R987391108 Material desc.(KS or DIN): GGG40 Drawing no.: AG027-T000MT06-G-001-A Scale: 1:1.5	

기타 주요 솔루션

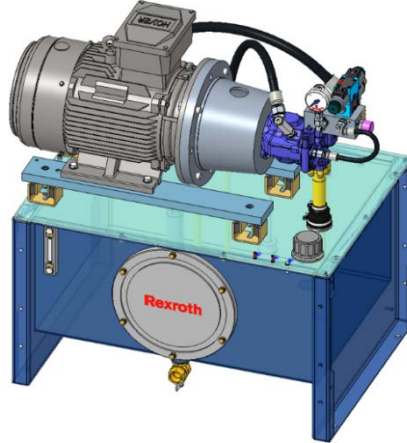
1. 가변속모터 솔루션! 싸이트로닉스! (Sytronix)

: 렉스로스 인버터 사용.



2. 스탠다드 유압파워유닛!

: 엔지니어링 비용을 절감하세요.



3. 인버터 내장형 HPU! 싸이트로박스! (CytoBox)

: 렉스로스 인버터 사용.



4. 인버터 내장형 소형 HPU! 싸이트로팩! (CytoPac)

: 렉스로스 인버터 사용.



Bosch Rexroth Korea Ltd.

부산시 강서구 미음산단 1로 29

www.boschrexroth.co.kr

Tel) 051-260-0765

E-mail) info.sle@boschrexroth.co.kr

