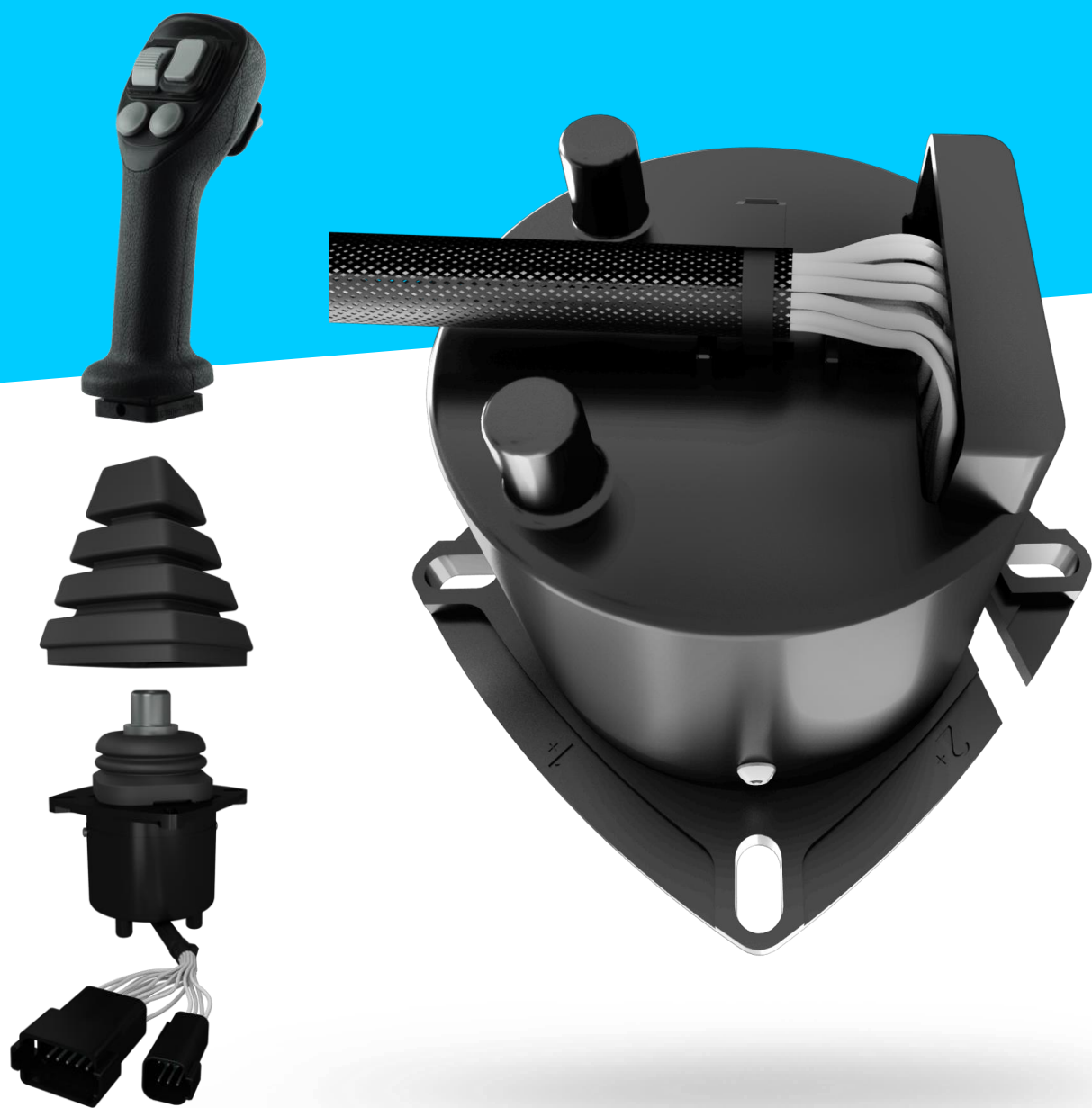


# 4THE5 Electronic joystick series 41

Universal joystick with configurable grip options for mobile machines



The workflows and drives of modern mobile machines need to be controlled with highest precision and safety – despite an increasing number of machine functions. As the interface between human and machine, joysticks are essential for the perception of machine behavior. Bosch Rexroth offers a modular and flexible joystick portfolio that can be individually adapted to different applications and a wide range of machine options thanks to a large number of standard configurations. Additionally, the electronic joysticks from Bosch Rexroth enhance the intuitiveness of machine operation.

## CUSTOMER BENEFITS

- Flexible adaptation to different applications and machine options
- High level of user friendliness
- Reliable operation in harsh environments
- Compliance with ISO 13849 safety requirements with less effort
- Easy integration into machine systems via a single CAN interface

## FUNCTION AND BENEFITS

### Flexible adaptation to different applications and machine options

Lean warehousing, variants for different needs, and easy customization thanks to a highly flexible portfolio: The 4THE5 electronic joystick series 41 from Bosch Rexroth offers a wide range of control grips with many grip shapes, and various control components such as rocker switches, proportional rollers, and pushbuttons that can be individually arranged in the grip. In addition, the joysticks are available as CAN bus, PWM, and analog signal outputs.

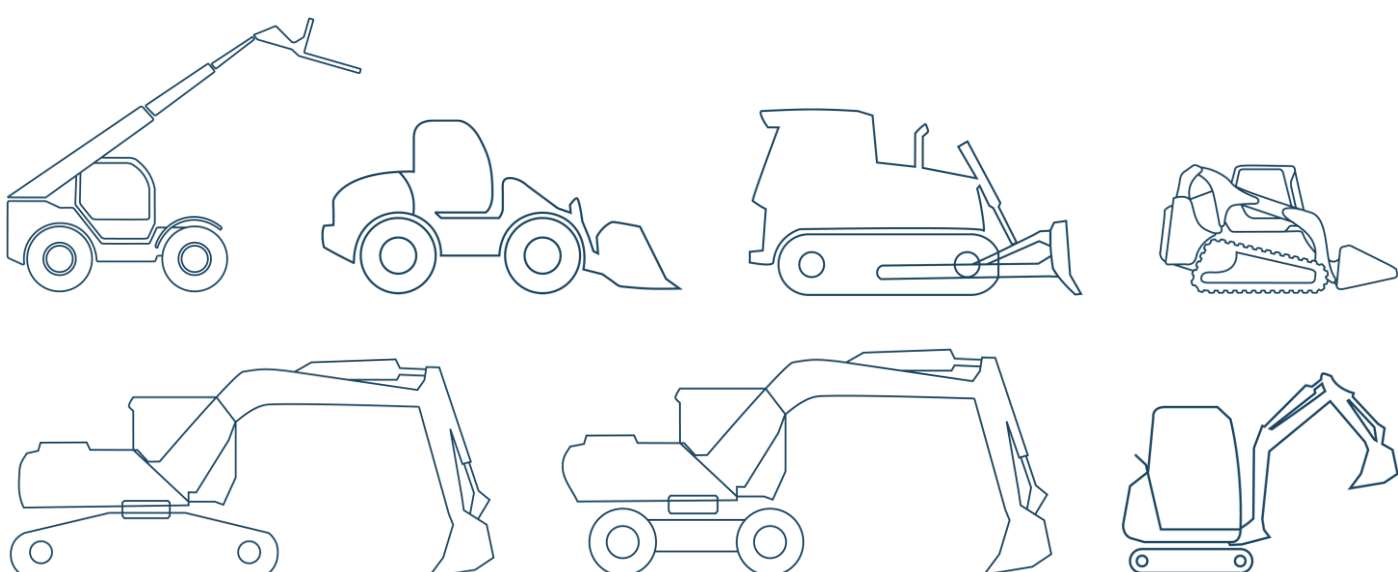
### High level of user friendliness

Operating as usual: The kinematics of the 4THE5 joystick's base follow the same plunger mechanism as the hydraulic pilot controls, so that the actuation forces and deflections are very similar. This provides a familiar operating feel and allows the operator to maintain the ergonomics known from machines with hydraulic pilot controls.

### Reliable operation in harsh environments

Ready for applications in dusty environments and any weather conditions thanks to the excellent protection of the electronic parts: With its potted electronics, the Rexroth 4THE5 joystick series 41 is IP67 protected and suitable for use in open and enclosed cabs alike.

## APPLICATIONS



TECHNICAL DATA

| 4THE5 Joystick   |  |
|------------------|--|
| Output signals   | CAN Plc, CAN PLd, analog 5v, PWM 5v      |
| Number of inputs | Up to 16 digital<br>Up to 7 proportional |
| Data sheet       | 29696, 29697                             |
| Service life     | 5 million cycles                         |
| Protection class | IP67                                     |
| Data sheet       | 29696<br>29697                           |



4THE5 Joystick with EC3500+ control grip

EXPLORE MORE



4THE5

Compliance with ISO 13849 safety requirements with less effort

The high reliability of the 4TH5 electronic joystick makes it easier to comply with the safety requirements of machine systems that require safety performance levels PLc or PLd according to ISO 13849. With its reliable and robust mechanics and embedded safety checks of the electronic signals, the joystick is available as a PLc or PLd version in accordance with the ISO 13849 standard.

Easy integration into machine systems via a single CAN interface

The 4TH5 electronic joystick series 41 from Bosch Rexroth makes cabling a breeze: Since the signal processing of the grip components is handled by the joystick base, the entire joystick can be connected to the machine via a single CAN connector. This reduces the number of I/Os used on the machine’s control unit and reduces the wiring effort.