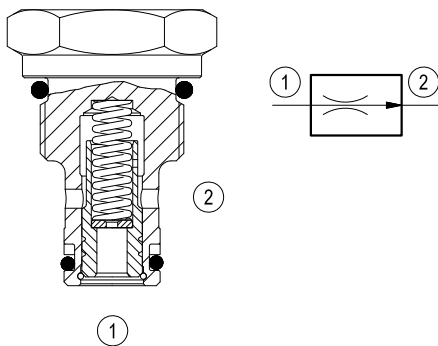


Flow control, 2-way pressure compensated fixed setting

Common cavity, Size 08

VRFA-08A

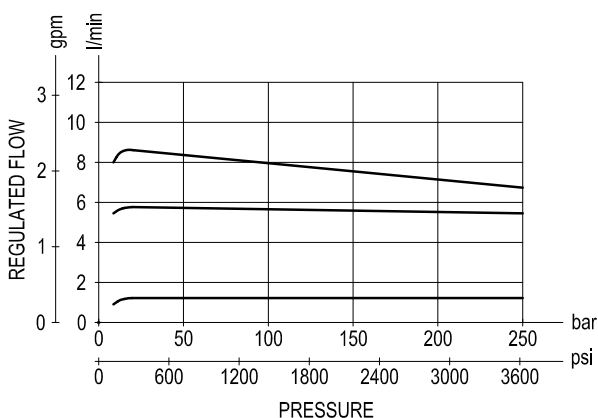
04.02.01.00.56 - Z



Description

A constant flow rate, regardless of system pressures, is established from 1 to 2 while a minimum pressure differential of 10 bar (145 psi) exists between the two ports. The valve cannot be adjusted for variable flow output. Flow from 2 to 1 is limited by the diameter of the selected control orifice and is not pressure compensated.

Performance

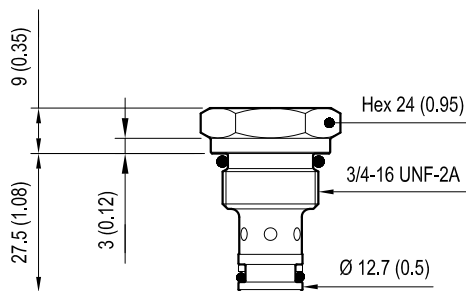


Technical data

Pressure min-max	bar (psi)	10-210 (145-3000)
Flow range	l/min. (gpm)	see "Regulated flow range" table
Fluid temperature range	°C (°F)	-30 to 100 (-22 to 212)
Installation torque	Nm (ft-lbs)	34-41 (25-30)
Weight	kg (lbs)	0.12 (0.27)
Cavity		CA-08A-2N see data sheet RE 18325-70
Seal kit (*)	code material no.	RG08A2010520100 R901101437
Fluids		Mineral-based or synthetics with lubricating properties at viscosities of 10 to 500 mm ² /s (cSt)
Filtration		Nominal value max. 10µm (NAS 8) ISO 4406 19/17/14
Installation		No restrictions
Other Technical Data		See data sheet RE 18350-50

(*) Only external seals for 10 valves

Dimensions



[mm (Inches)]

Ordering code

04.02.01.00	56	Z	00	*
-------------	----	---	----	---

Flow control, 2-way pressure compensated fixed setting

Common cavity, Size 08

Series 0/A to L
unchanged performances and dimensions

Version and options standard

	Regulated flow range l/min. (gpm) ±10%
= 09	0.9 (0.24)
= 13	1.3 (0.34)
= 15	1.5 (0.4)
= 20	2 (0.53)
= 30	3 (0.79)
= 40	4 (1.06)
= 53	5.3 (1.4)
= 65	6.5 (1.72)
= 80	8 (2.11)

Type	Material number
040201005609000	R901109350
04020100561300A	R901109351
040201005615000	R901184436
04020100562000A	R901109352
040201005630000	R901109355

Type	Material number
04020100564000A	R901109357
040201005653000	R901109360
04020100566500A	R901109361
04020100568000A	R901109362