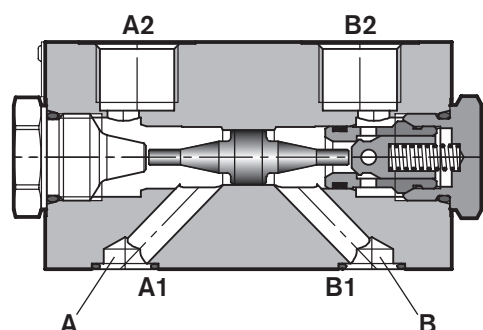


Flangeable elements with single or double acting cross piloted check valves



EDCM/EDCMF-VR



Description

These secondary flangeable elements can be interfaced and bolted on top of the A and B ports of the ED elements of the directional valve assembly.

They incorporate two cross piloted check valve which allow free flow toward the A and B outlet ports, and lock in a leak free mode the flow returning from the actuator, until sufficient pilot pressure is built up in the opposite line and the check valve is opened.

Depending on the version selected (AB, or 0A, or 0B), the PO check valve is in both A and B ports, or in A port only, or in B port only (see hydraulic symbols).

The pilot ratio is 3:1, consequently, the pilot pressure needs to be at least 1/3, or 33% of the load induced pressure in the actuator before Check Valve opens, and oil can return to tank.

The body of these elements is made of Yellow Zinc Plated (Cr+3) Cast Iron (CI). Hydraulic Ports A2 and B2 are size G3/8 or G1/2 or 3/4-16 UNF 2-B (SAE8).

Technical Data (for applications outside these parameters, please consult us)

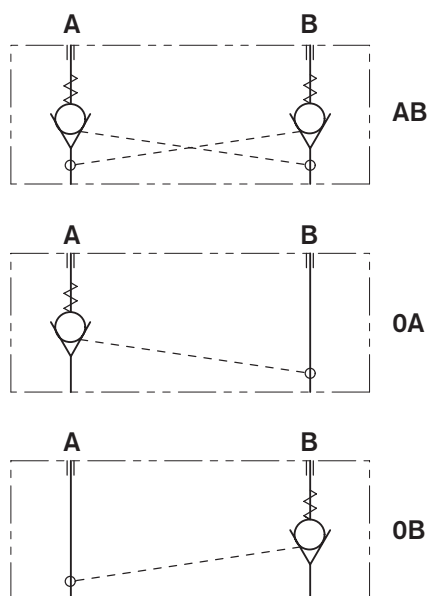
General

Weight	kg (lbs)	2.0 (4.4)
Ambient Temperature	°C (°F)	-20....+50 (-4....+120) [NBR seals]

Hydraulic

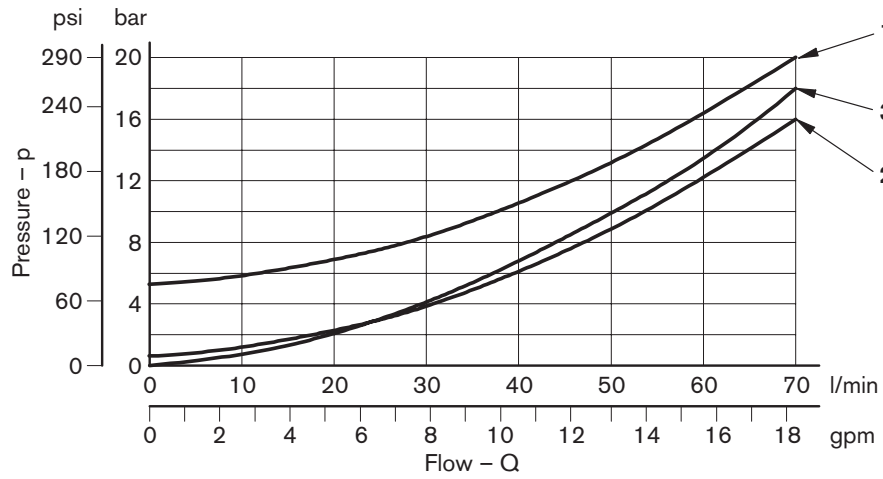
Maximum pressure	bar (PSI)	310 (4500)
Maximum flow	l/min (GPM)	70 (18.5)
Hydraulic fluid	Mineral oil based hydraulic fluids HL (DIN 51524 part 1). Mineral oil based hydraulic fluids HLP (DIN 51524 part 2). For use of environmentally acceptable fluids (vegetable or polyglycol base) please consult us.	
Fluid Temperature	°C (°F)	-20....+80 (-4....+176) [NBR]
Permissible degree of fluid contamination	ISO 4572: $\beta_{\geq 75} X=10...12$ ISO 4406: classe 19/17/14 NAS 1638: classe 8	
Viscosity range	mm ² /s	5....420

Hydraulic – Symbol



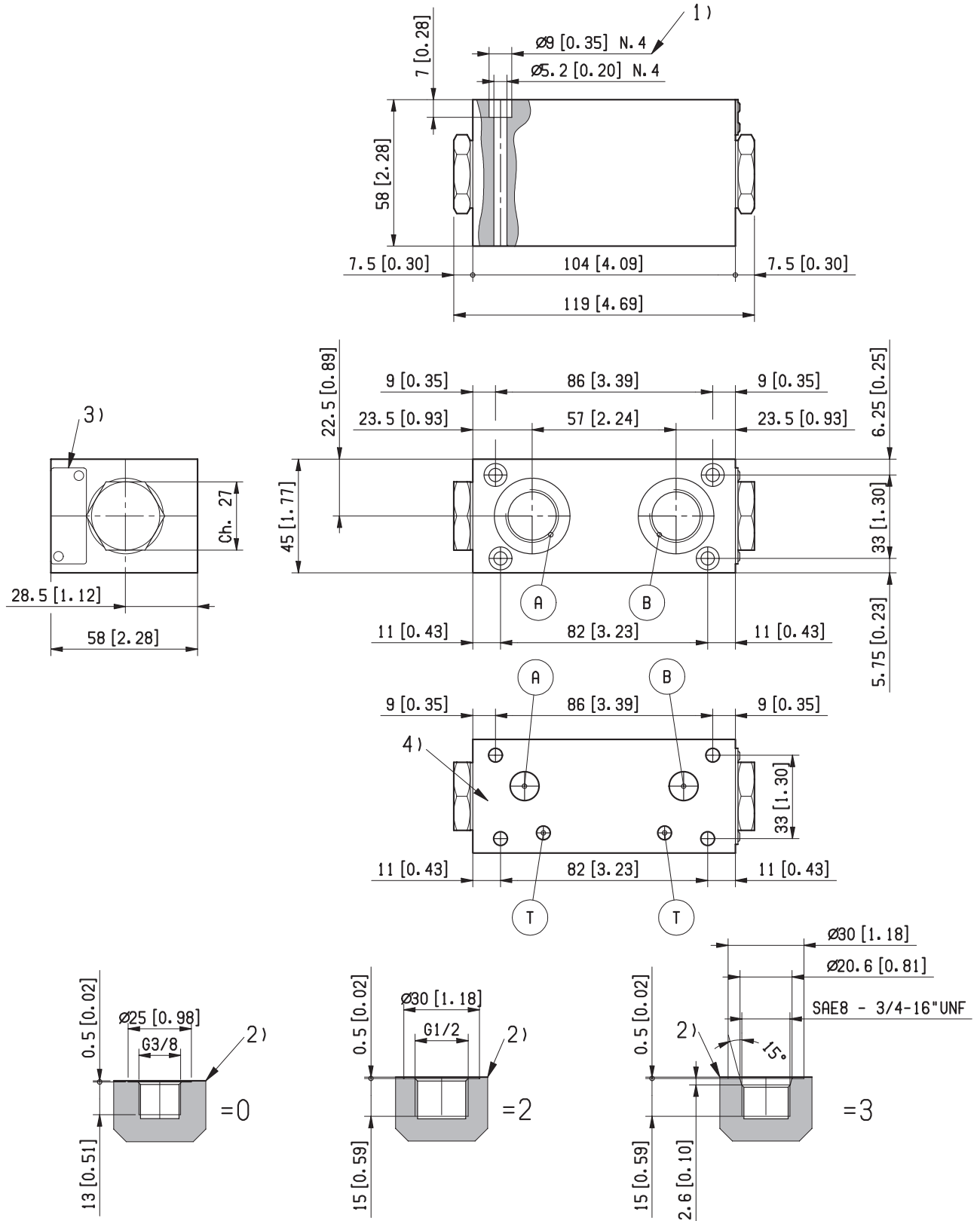
Characteristic Curves

Measured with hydraulic fluid ISO-VG32 at 45° ± 5° C [113° ± 9° F]; ambient temperature 20° C [68° F].



Cracking pressure	Curve No.
5 bar [72.5 psi] free flow either A1 > A2 or B1 > B2	1
0.5 bar [7.3 psi] free flow either A1 > A2 or B1 > B2	2
Returning flow, fully piloted, either A2 > A1 or B2 > B1	3

External Dimensions and Fittings



- 1 Four through holes $\varnothing 5.2$ mm [0.205 inch] for screws and tightening torques see data sheet RE 18301-90.
- 2 A and B ports for the actuator.

- 3 Identification label.
- 4 Machined for interfacing to modular elements (= M ports version).

Ordering Details

		L	85	41	---	---	00	---	0		
Family Directional Valve										Additional fixtures Standard	
Model Flangeable element for EDC valves										Ports 0 = G 3/8 DIN 3852 2 = G 1/2 DIN 3852 3 = 3/4-16 UNF 2-B (SAE 8) M = Machined for interfacing to modular elements	
Type Cross piloted check valves											
Congfiguration Pressure relief for both A and B ports Pressure relief for port A only Pressure relief for port B only										Cracking pressure 01 = 0.5 bar (7.3 psi) 05 ¹⁾ = 5 bar (72.5 psi)	

1) Recommended version for EDC-P (RE 18301-09)

Bosch Rexroth Corp.
Hydraulics
2315 City Line Road
Bethlehem, PA 18017-2131
USA
Telephone (610) 694-8300
Facsimile (610) 694-8467
www.boschrexroth-us.com

© This document, as well as the data, specifications and other information set forth in it, are the exclusive property of Bosch Rexroth Corporation. Without their consent it may not be reproduced or given to third parties.

The data specified above only serve to describe the product. No statements concerning a certain condition or suitability for a certain application can be derived from our information. The information given does not release the user from the obligation of own judgment and verification. It must be remembered that our products are subject to a natural process of wear and aging.