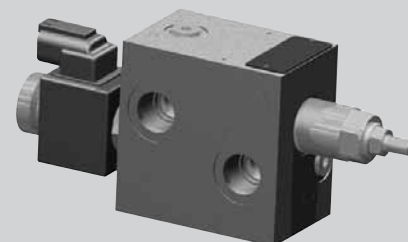
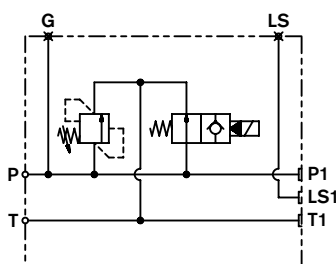


Inlet Plate – Relief and Dump

TA-05



Circuit



Description

The inlet elements TA-05-__ are employed to connect the external P and T lines to the P and T channels inside the ED elements of the Directional Valve Assembly. They incorporate a pressure relief cartridge which limits the primary pressure in the P line. The relief setting can be checked through the Test Point port G. When fitted, the Normally Open Solenoid Unloading VEI Cartridge unloads to Tank all the P line flow; unloading stops when the cartridge coil is energized.

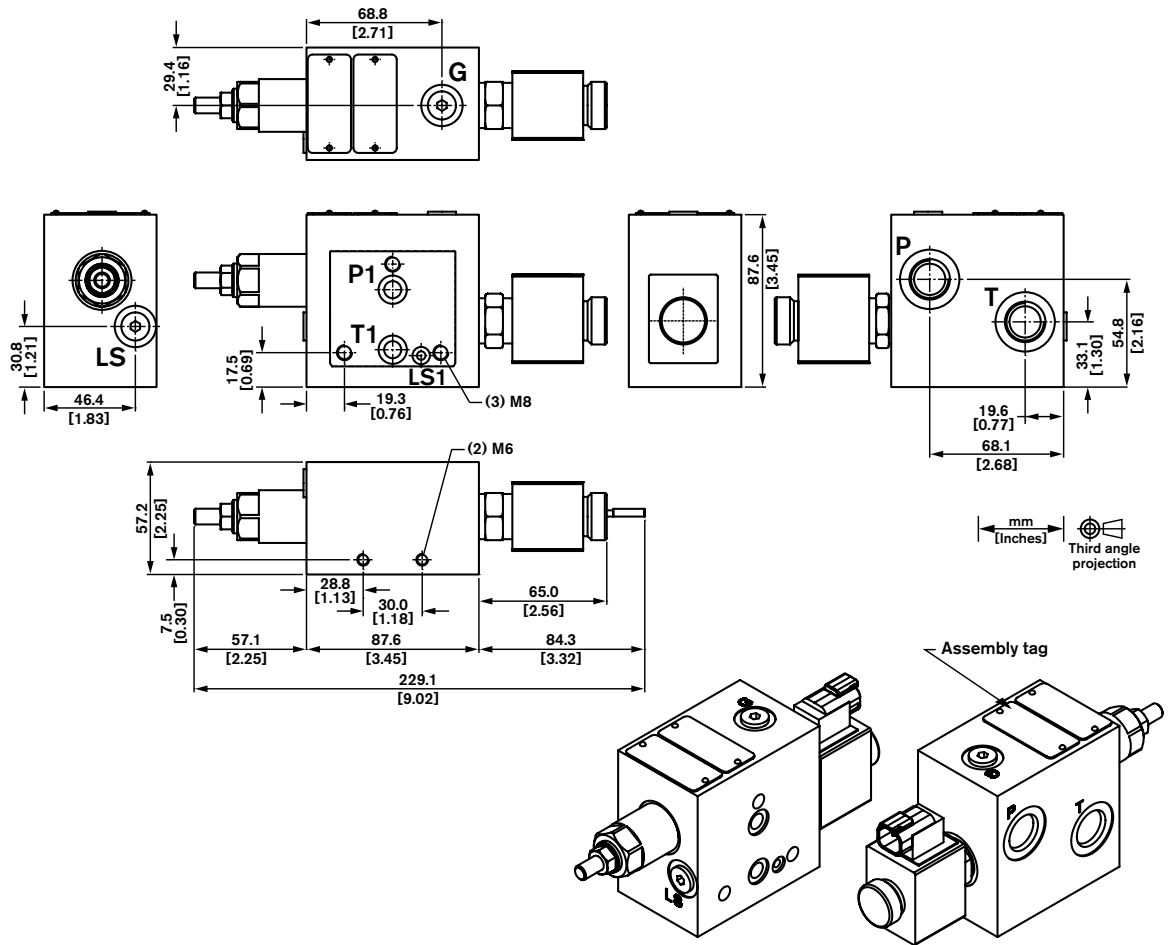
- Port sizes: P and T – SAE 8; LS and G – SAE 4.
- Ports LS and G are provided with plugs.
- Special plating and coating available, C.F.

Technical Features

Maximum pressure	bar [psi]	210 [3000]*
Maximum inlet flow	l/min [gpm]	60 [15]
Material		Aluminum
Seals		Buna N (NBR)
Fluid Temperature	°C [°F]	–20 to +80 [–4 to +176]

* For higher pressure, C.F.

Overall Dimensions



Note! P1 and T1 use 9mm diameter flow restrictor.

Ordering Details

TA - 05 - 56 - - - - -

Inlet element	
Port size SAE 8	= 56
Pressure range	
Direct acting	
35–140 bar (500–2000 PSI)	= 1
105–210 bar (1500–3000 PSI)	= 2
175–350 bar (2500–5000 PSI)	= 3
Pilot operated	
35–140 bar (500–2000 PSI)	= 1
70–280 bar (1000–4000 PSI)	= 2
140–420 bar (2030–6000 PSI)	= 3
Relief type	
Direct acting	= D
Pilot operated	= P

Dump valve override type**	
A =	No manual override
C =	Push & Twist manual override

Coil features*	
Voltage	
00 =	No coil
OB =	12 Vdc
OC =	24 Vdc

Coil features*	
Connection type	
00 =	No coil
01 =	DIN 43650
07 =	Deutsch DT04-2P

* Alternate connections and voltages available, see page 265.

** Alternate 2-way solenoid cartridge options available, see pages 253 and 257.

Bosch Rexroth Corp.
Hydraulics
2315 City Line Road
Bethlehem, PA 18017-2131
USA
Telephone (610) 694-8300
Facsimile (610) 694-8467
www.boschrexroth-us.com

© This document, as well as the data, specifications and other information set forth in it, are the exclusive property of Bosch Rexroth Corporation. Without their consent it may not be reproduced or given to third parties.

The data specified above only serve to describe the product. No statements concerning a certain condition or suitability for a certain application can be derived from our information. The information given does not release the user from the obligation of own judgment and verification. It must be remembered that our products are subject to a natural process of wear and aging.