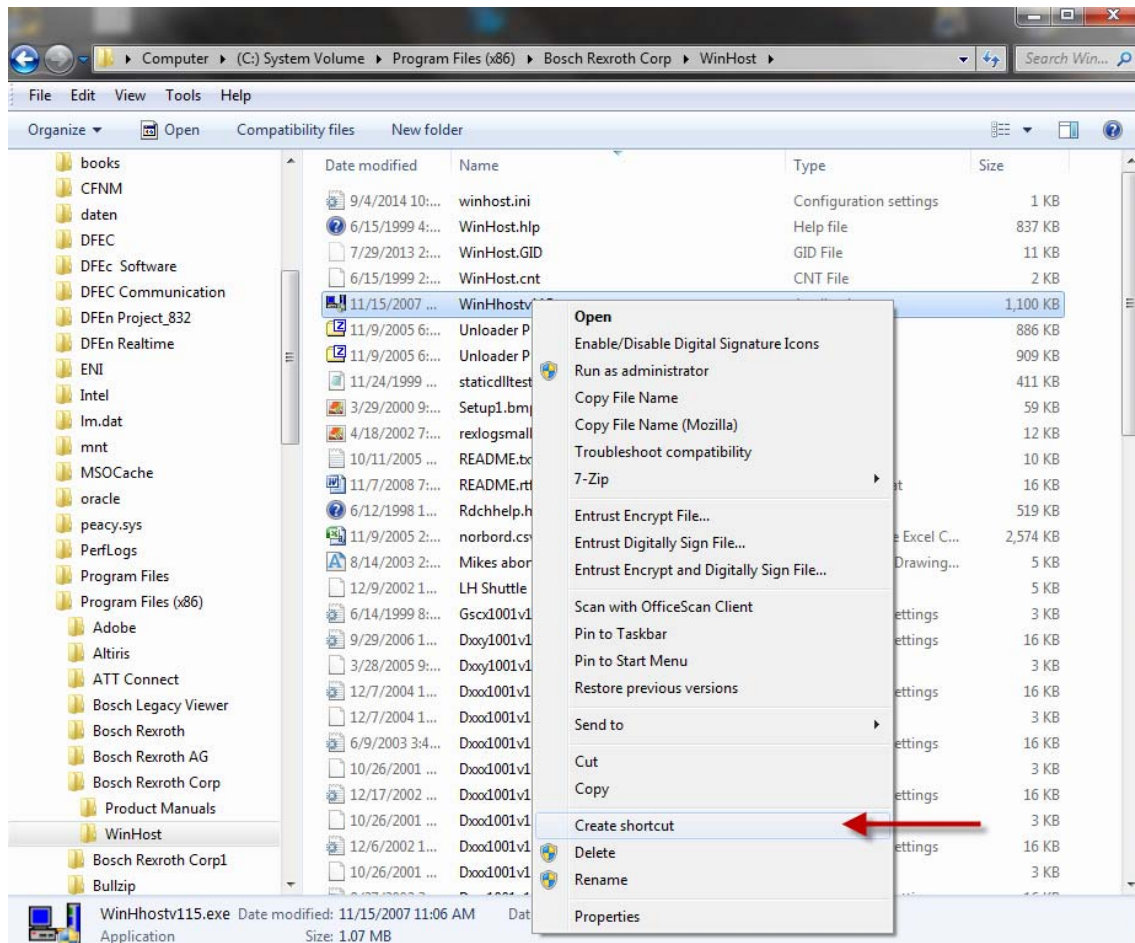


WinHost 1.15 Bugs & Fixes

1) The shortcut created during installation does not work.

A) Create a new shortcut by right clicking the .exe file where WinHost is saved.

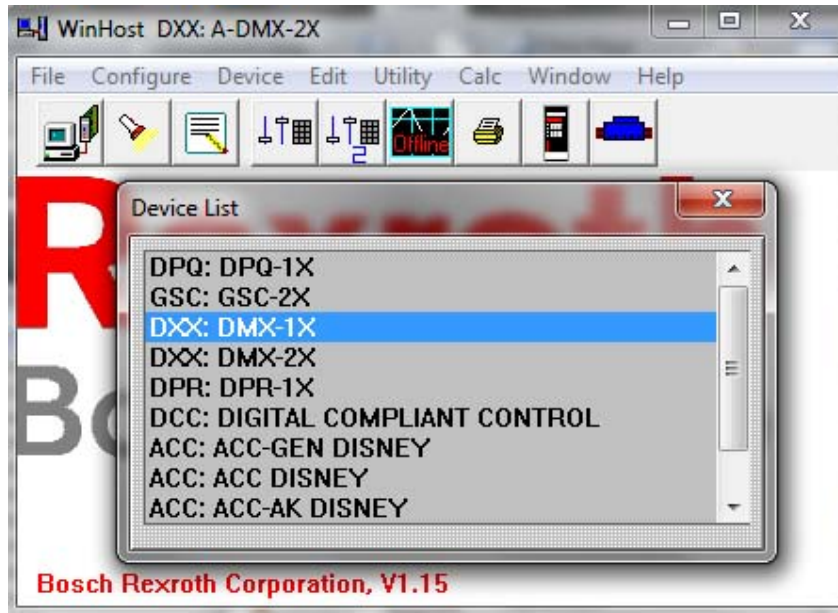
(1) C:\ProgramsX86\BoschRexrothCorp\WinHost



2) Cannot communicate to DMX-1X cards.

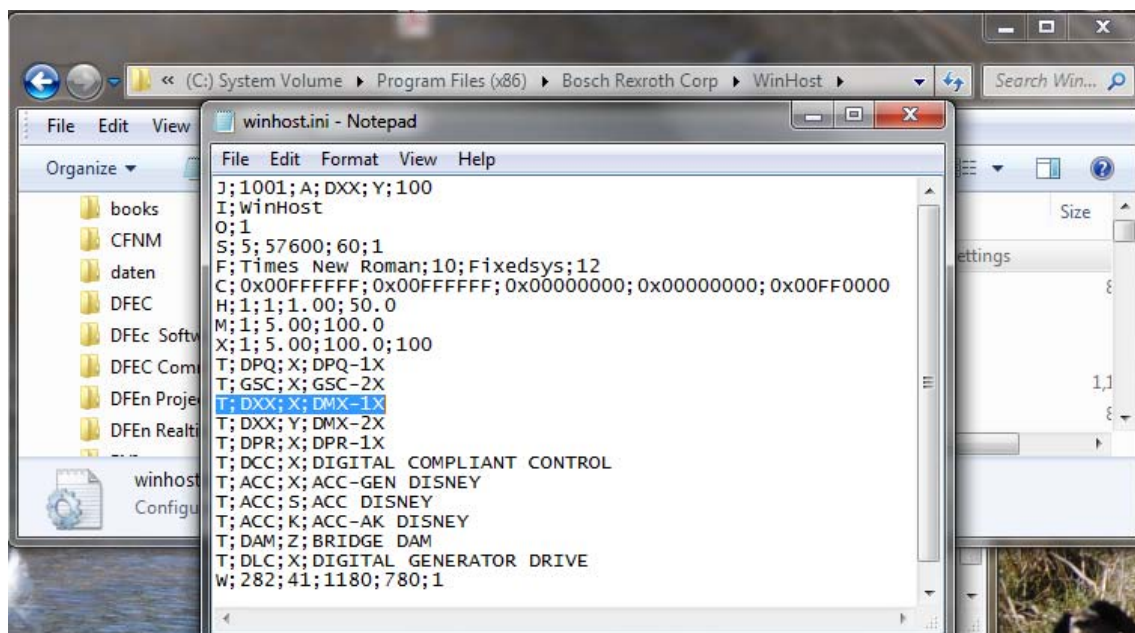
A) Check "Device List" in WinHost

(1) Click "Device" and then select "Device List"



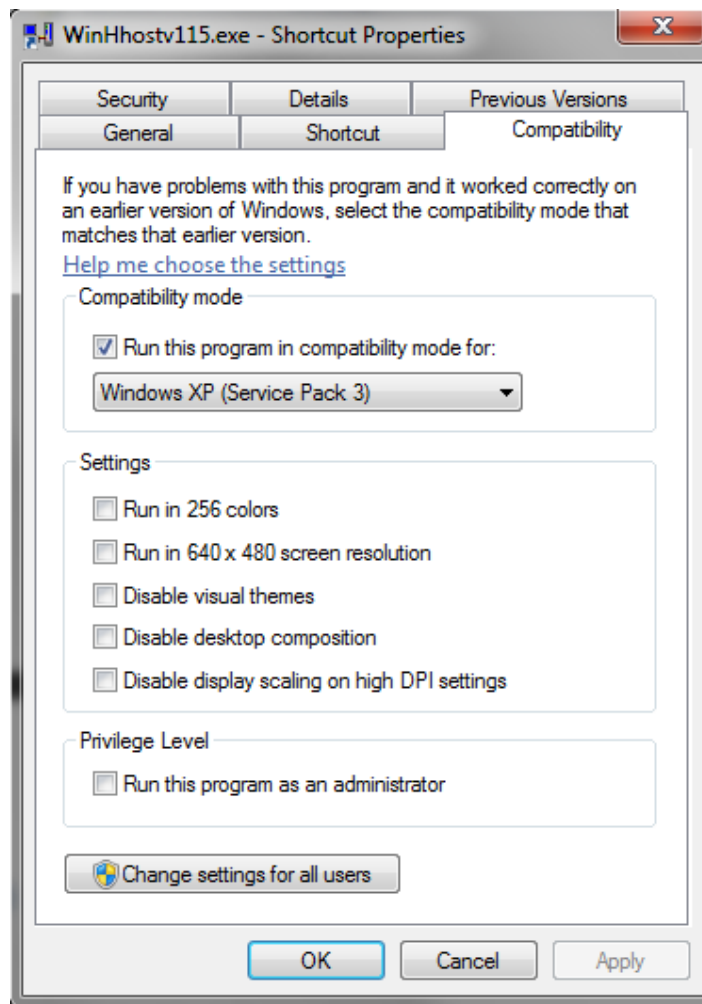
B) If DMX-1X is not there then go to the WinHost.ini file and add:
T;DXX;X;DMX-1X

(1) C:\ProgramFiles (x86)\Bosch Rexroth Corp\WinHost



3) Windows 7 systems

- A) Right click on the .exe file and select properties.
- B) Select the “Compatibility” tab.
- C) Select “Run this program in compatibility mode for: Windows XP (Service Pack 3).
- D) Click “Apply” and then “OK”



- 4) Solution to fix communication problems when going from different series DMX cards.
 - A) Search for card in WinHost
 - B) If Winhost doesn't find the card, close WinHost and cycle power on the DMX.
 - C) Restart Winhost and search again. The card should be found.