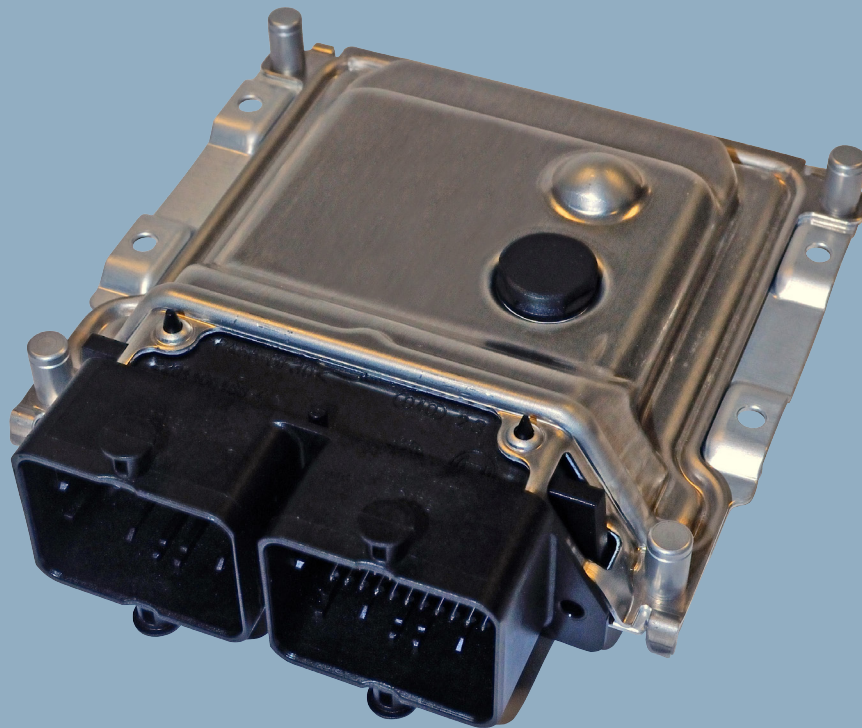


DSD45 Dual Solenoid Driver Software for the RC4-5 Controller



Energy system design for optimized power management

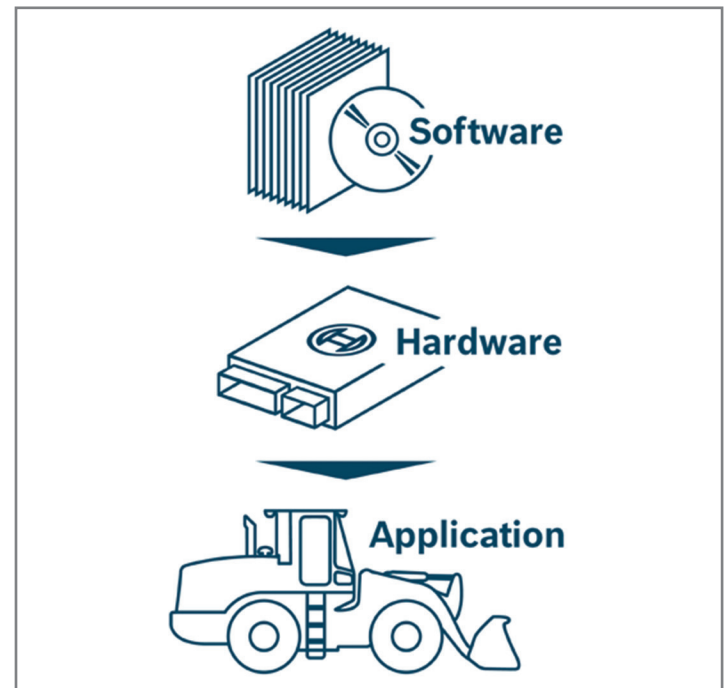
From the application software to the application solution, BODAS makes the difference!

Advantages at a glance

- ▶ Intelligent amplifier for proportional pump, motor, and valve applications
- ▶ Flexible interface compatible with common analog, digital and CAN signal types
- ▶ Full compliment of adjustments to optimize hydraulic and machine performance
- ▶ Functions to simplify integration into machine control

Applications

- ▶ Drive control
- ▶ Load control
- ▶ Speed control
- ▶ Valve control



RC4-5 / 30 Controller

Specifications

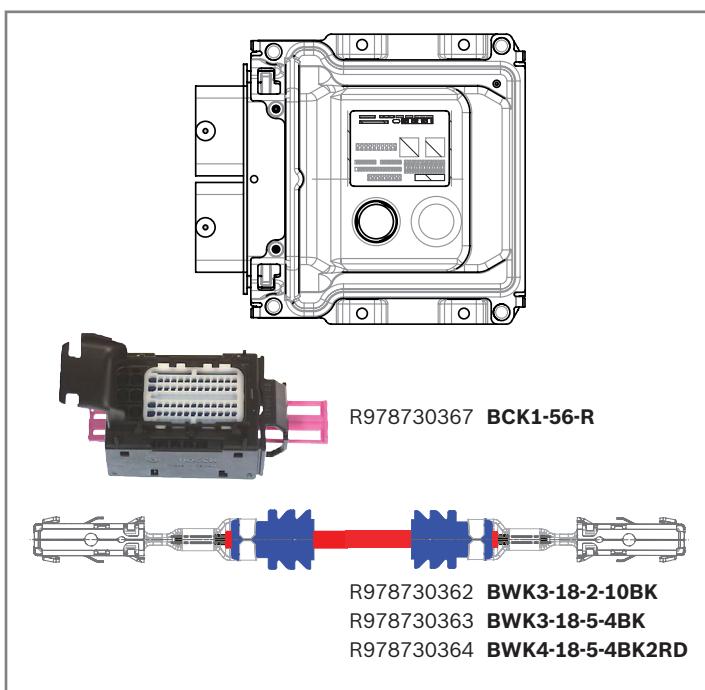
- ▶ 32 Bit TriCore Processor

Technical data

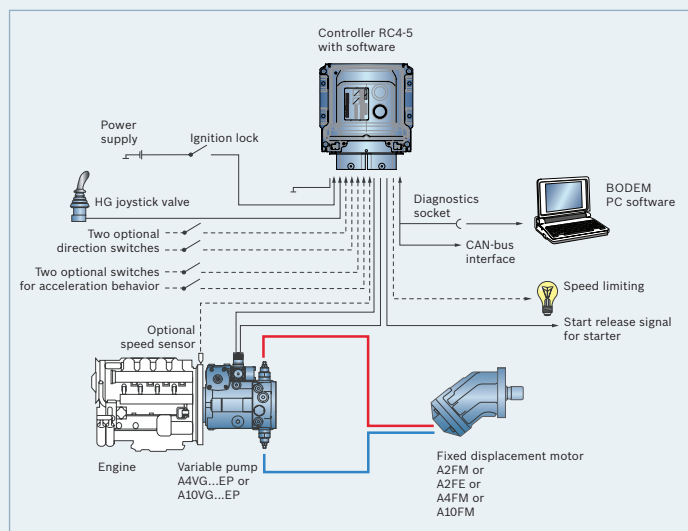
- ▶ Microcontroller TC1724
- ▶ Clock Frequency 80 MHz
- ▶ Supply voltage 8 – 32 VDC
- ▶ EMC 200 VRMS/m
- ▶ Operating Temperature (-40 to +85 °C)
- ▶ IP66 Protection

Connector Kits / Wire Kits

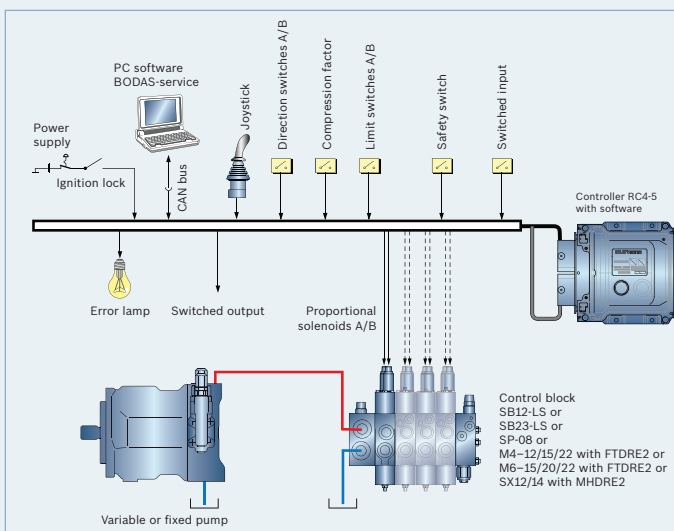
New connector kits (BCK), and wire kits (BWK) come with everything you need to quickly create and assemble a wire harness for your new RC4-5 controller. The wire kits come with pre-crimped pins, alleviating the need to purchase crimp tools. Wire kits can be ordered in various lengths, as well as black or red colored wire.



▼ Drive application

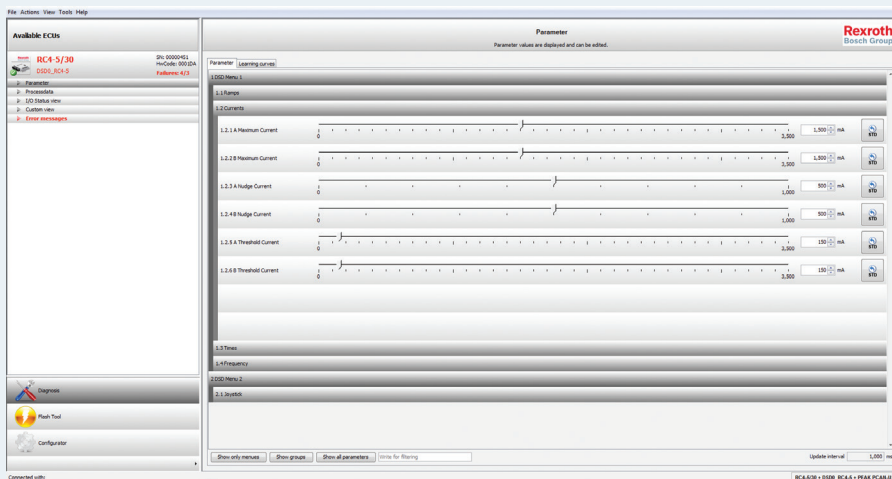


▼ Valve application



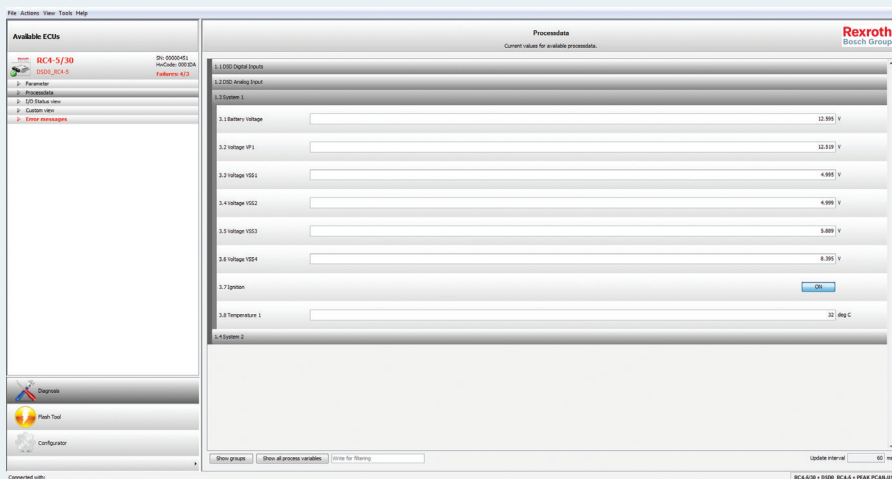
DSD45 Dual Solenoid Driver for RC4-5

The new DSD45 program is written specifically to take advantage of the new features and functionality of the RC4-5 microcontroller. The DSD45 program allows you to control closed loop current PWM outputs for applications such as drive control, or valve control (see inlay illustrations). The program comes pre-loaded and only requires a few simple setup parameters via the Bodas-service tool.



◀ Bodas-service tool

With the BODAS-service software, the programs can be quickly and simply downloaded to the controller via the Flash module. Extensive service functions, such as diagnostics, parameter setting or display of process variables are available via the graphical Windows interface of BODAS-service. This enables simple parameter setting and diagnostics in order to place the machine in service quickly and safely.



Easy, user-friendly control of pumps and valves

The RC4-5/30 with DSD45 software from Rexroth amplifies and regulates CAN or voltage control signals from joysticks, sensors or potentiometers to ensure the effective, reliable actuation of pumps, motors, and valves. In addition, the new DSD45 reduces manufacturing costs with its ease of installation and configuration. Vehicle operators benefit as well from smooth and predictable machine operation, allowing a safer and more ergonomic experience. Integrated failure detection and automatic fail-safe mode switching also allows the RC4-5/30 + DSD45 to support safer machine operations; connection problems are detected from damaged wire or loose connectors. In these ways, the RC4-5/30 + DSD45 intelligent amplifier benefits both machine operators and manufacturers in controlling hydraulic equipment with Rexroth technology.



Bosch Rexroth Corporation

Mobile Hydraulics

14001 South Lakes Drive

Charlotte, NC 28273

Telephone: 1-800-REXROTH

(739-7684)

info@boschrexroth-us.com

www.boschrexroth-us.com

Find your local contact person here:

www.boschrexroth-us.com/contactus

The data specified above only serve to describe the product. No statements concerning a certain condition or suitability for a certain application can be derived from our information. The information given does not release the user from the obligation of own judgment and verification. It must be remembered that our products are subject to a natural process of wear and aging.