

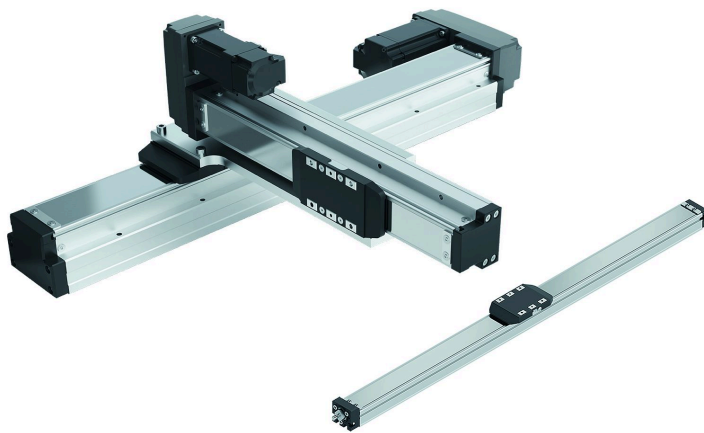
## PRESS INFORMATION

### Operate quickly when handling small parts

Manuela Kessler | 14.04.2025 | Lohr am Main / Germany | PI 025/25

Bosch Rexroth increases efficiency with fully configured solutions for its compact linear modules SMS

- Fully configured solutions for self-assembly of single and multi-axis systems including drive
- Easy commissioning: thanks to pre-parameterized stepping motors with integrated drive controller
- Fast delivery: all components available from stock



Compact, cost-effective and quick to use: single or multi-axis systems made of small modules including stepping motors and integrated drive controllers. (Image source: Bosch Rexroth AG)

**Solutions for handling small parts must be compact, cost-effective, and quick to implement. Bosch Rexroth meets these market requirements with economical solutions for single and multi-axis systems. The space-optimized SMS small modules, which are available from stock, now also have fully configured drive and connection elements. This makes them perfect for combining. New high-performance stepping motors with integrated drive controllers significantly shorten commissioning thanks to pre-parameterization and offer a favorable price/performance ratio.**

Whether it's automotive, electronics, consumer goods, medical technology, or 3D printing: plant and machine manufacturers have an economical solution for handling small parts with the ultra-compact set of SMS linear axes. Building on the compact SMS linear modules in sizes 30 to 120, Bosch Rexroth is expanding its wide range of products with configured motors, attachment options, and connection technology. As a result, users can implement both linear single-axis systems and multi-axis solutions for handling small parts flexibly, easily, quickly, and economically. The electromechanical single axes SMS are a cost-effective and energy-efficient alternative to pneumatic solutions.

#### **New stepping motors increase efficiency**

New pre-parameterized stepping motors with onboard controllers expand the existing range of servo motors. Parameterization is carried out without any additional tools using the respective

## PRESS INFORMATION

controller. A multi-Ethernet interface with an EtherCAT communication profile provides the necessary connectivity. With the open control system ctrlX CORE, Bosch Rexroth also provides users with a suitable control solution as an option.

### Basic Information Bosch Rexroth

As one of the world's leading suppliers of drive and control technologies, Bosch Rexroth ensures efficient, powerful and safe movement in machines and systems of any size. The company bundles global application experience in the market segments of Mobile and Industrial Applications as well as Factory Automation. With its intelligent components, customized system solutions, engineering and services, Bosch Rexroth is creating the necessary environment for fully connected applications. Bosch Rexroth offers its customers hydraulics, electric drive and control technology, gear technology and linear motion and assembly technology, including software and interfaces to the Internet of Things. With locations in over 80 countries, around 32,600 associates generated sales revenue of 6.5 billion euros in 2024.

### Basic Information Bosch

The Bosch Group is a leading global supplier of technology and services. It employs roughly 417,900 associates worldwide (as of December 31, 2024). According to preliminary figures, the company generated sales of 90.5 billion euros in 2024. Its operations are divided into four business sectors: Mobility, Industrial Technology, Consumer Goods, and Energy and Building Technology. With its business activities, the company aims to use technology to help shape universal trends such as automation, electrification, digitalization, connectivity, and an orientation to sustainability. In this context, Bosch's broad diversification across regions and industries strengthens its innovativeness and robustness. Bosch uses its proven expertise in sensor technology, software, and services to offer customers cross-domain solutions from a single source. It also applies its expertise in connectivity and artificial intelligence in order to develop and manufacture user-friendly, sustainable products. With technology that is "Invented for life," Bosch wants to help improve quality of life and conserve natural resources. The Bosch Group comprises Robert Bosch GmbH and its roughly 470 subsidiary and regional companies in over 60 countries. Including sales and service partners, Bosch's global manufacturing, engineering, and sales network covers nearly every country in the world. Bosch's innovative strength is key to the company's further development. At 136 locations across the globe, Bosch employs some 86,900 associates in research and development, of which nearly 48,000 are software engineers.

### Press Contact

Please get in touch with our Press Contact



**Manuela Kessler**

Spokesperson  
technology topics  
+49 9352 184145

[Manuela.Kessler@boschrexroth.de](mailto:Manuela.Kessler@boschrexroth.de)