

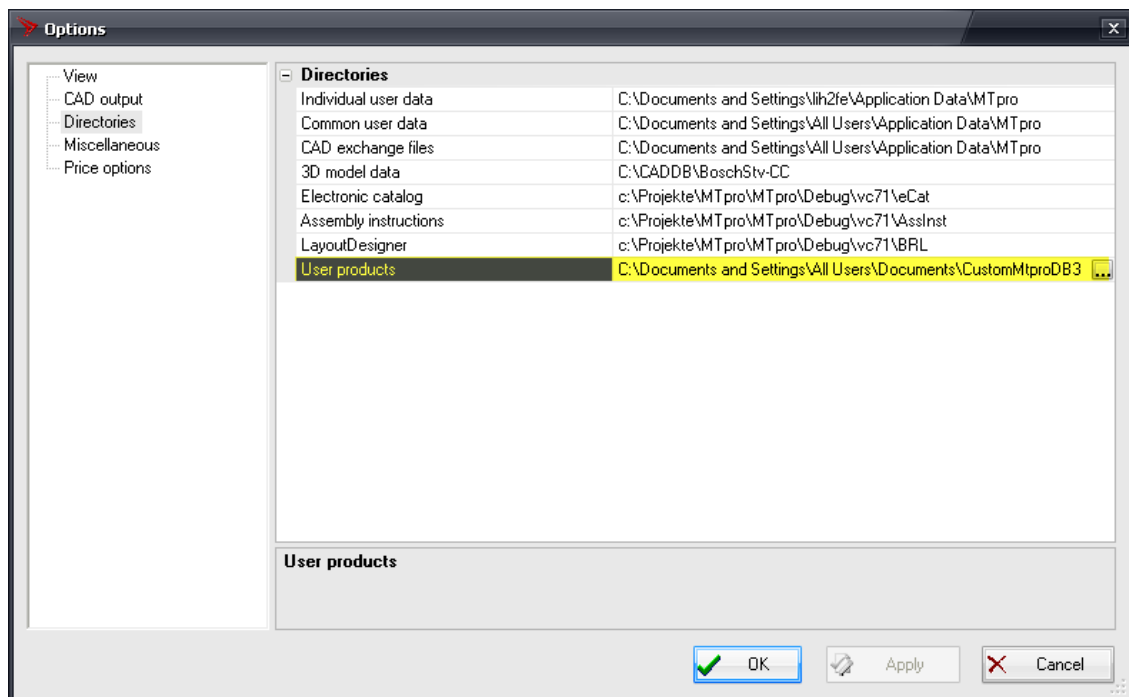
# User products in MTpro

MTpro now offers the option to integrate your own products (user products) in MTpro. This allows you to take advantage of the complete functionality of MTpro, including the creation of parts lists and CAD models, as well as planning in LayoutDesigner with in-house components. The user products option is available with a valid LayoutDesigner license.

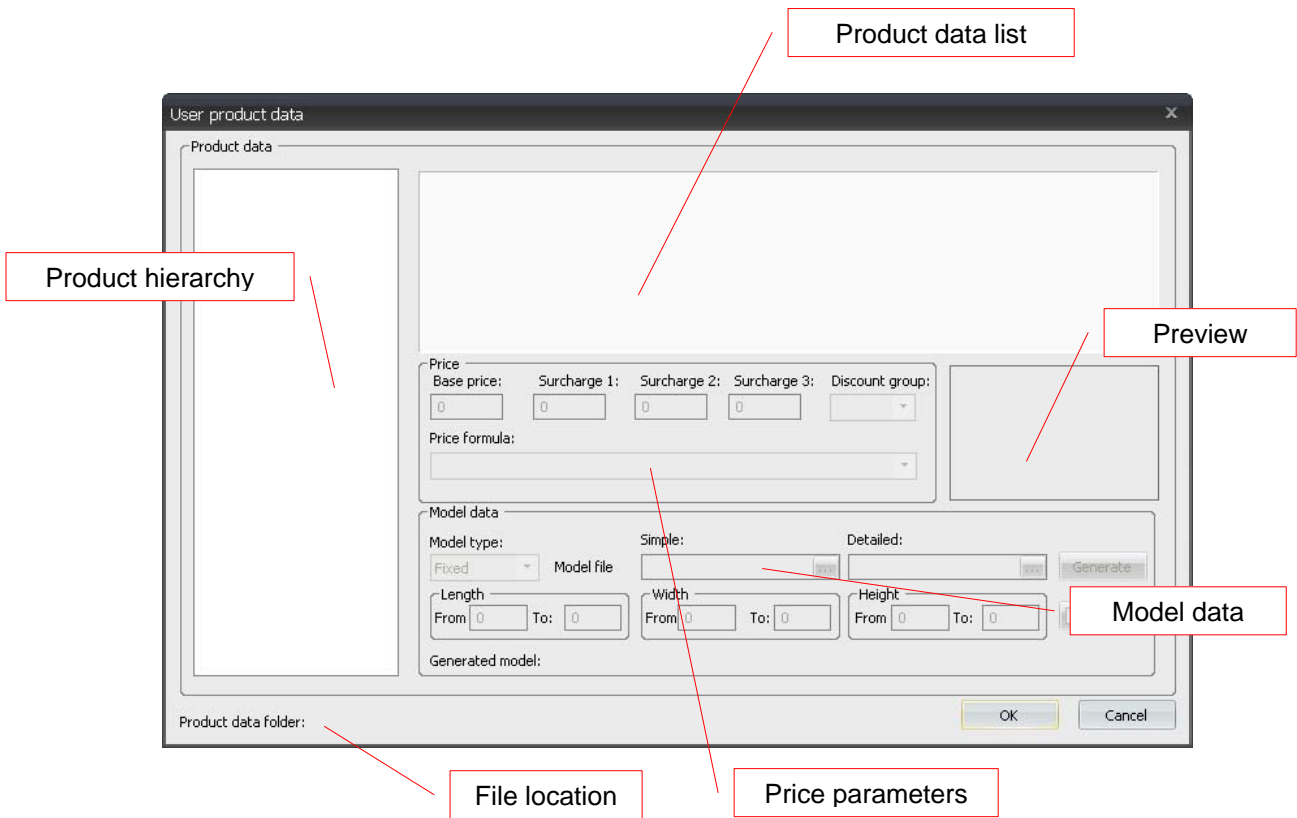
## How to add your products to MTpro

Select the following commands to add your products to MTpro:

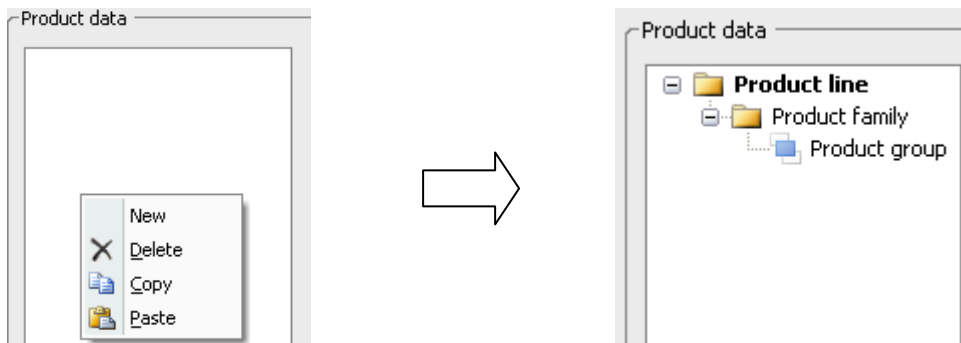
1. Under *Extras -> Options/Directories*, select “User products” and define a folder in which you would like to store your products:

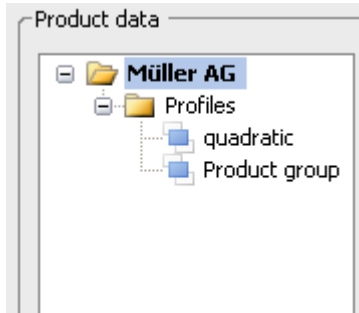


2. Go to *Extras -> User products* and select the dialog to add user products.



Right-click on the product hierarchy field and select "New" to create a new entry. A new product hierarchy, with a product line, product family and product group, will be created automatically.



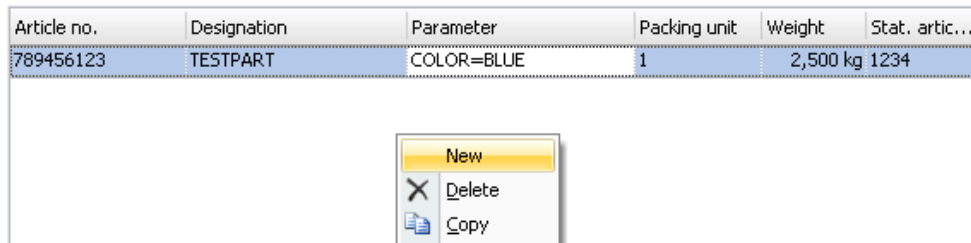


The designations in the product hierarchy can be changed by clicking on the text and overwriting the entries.

You can copy and move the product hierarchy entries via drag & drop and the context menu. Existing entries can be deleted via the “Delete” command in the context menu or the delete key.

- To add new products to the product group in the product data list, right-click inside the dialog and select “New”.

### Product data list dialog



Enter the desired article number, designation, fixed parameters, packing unit, weight and unit of weight (e.g. kg, g/mm, kg/m<sup>2</sup>, kg/m<sup>3</sup>), and the customs tariff number for your product. You can copy and move the product data via drag & drop and the context menu. Existing entries can be deleted via the “Delete” command in the context menu or the delete key.

If you copy an article to create a similar entry, make sure to modify the part number afterwards. Otherwise, it will be treated as identical and any changes you make will be applied to all other articles with the same number.

### Pricing dialog

A basic price and discount group must be entered for each product. The discount groups D1, D2, and D3 can be defined by going to Extras -> Options/Price options (only visible after entering the price password).

The surcharge and price formula fields are only available for the *Profile* and *Box* model types (see below: model data). The different surcharges are integrated in price calculations using the price formula, depending on the model type.

Price

Base price:	Surcharge 1:	Surcharge 2:	Surcharge 3:	Discount group:
<input type="text" value="10"/>	<input type="text" value="0"/>	<input type="text" value="0"/>	<input type="text" value="0"/>	<input type="text" value="D1"/>

Price formula:

## Model data dialog

Different model types can be selected under “Model type”.

Model data

Model type: Profile Model file ...

Simple: ... Detailed: ... Generate

Length From 10 To: 500 Width From 10 To: 500 Height From 10 To: 500 Color

Generated model:

The following model types are available:

- **Accessories**  
A CAD model is not included for this model type; additional settings are not required.
- **Fixed**  
You can load any model file of your product for the fixed model. The file format should be either SAT (\*.sat) or STEP (\*.stp) and you can define a model file with either a low or high level of detail. If the color was not defined in the CAD model, “Color” can be used to adjust the appearance of the model.
- **Profile**  
After loading a model file, the minimum and maximum length of the profile must be defined. The STEP or SAT model always needs to be generated with the maximum profile length. If the color was not defined in the CAD model, “Color” can be used to adjust the appearance of the profile.

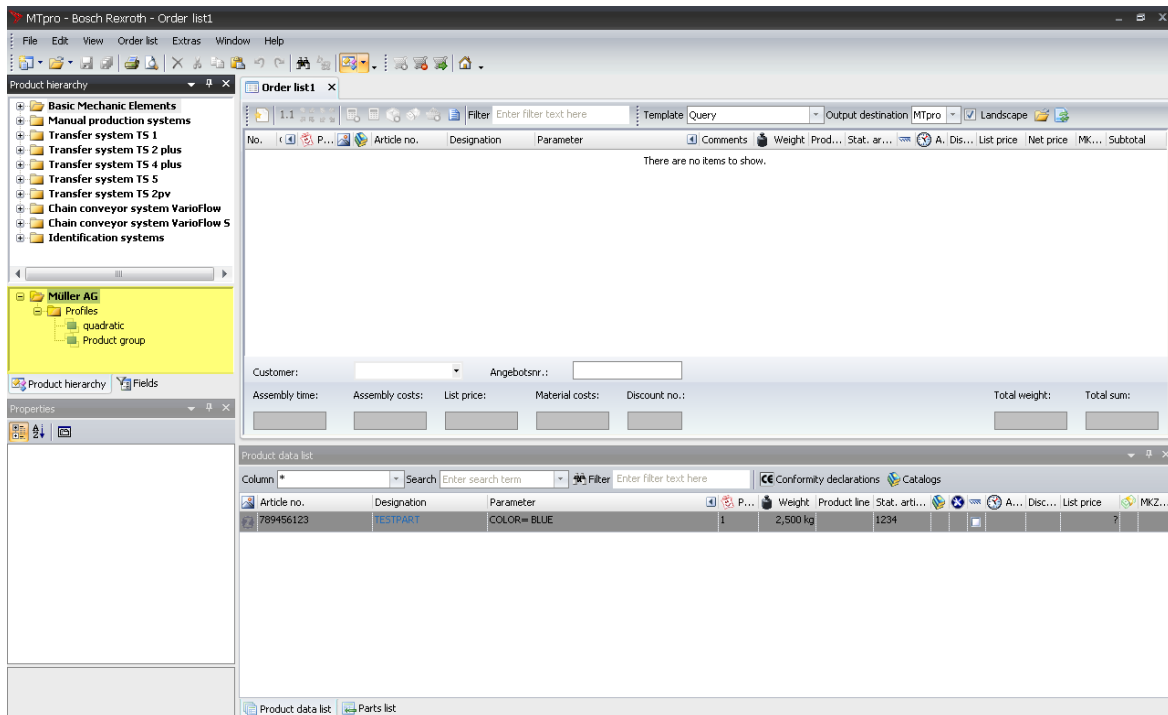
- **Box**

The box model creates a cube with a customized length, width, and height. The permissible minimum and maximum values must be defined. If only a specific length, width and/or height is permitted, the minimum and maximum values must be identical for the respective parameter. This model type can be used, for example, to create table tops or panes.

generates the desired model and adds it to MTpro.

The text field *Generated model* specifies the name of the generated model and the folder in which it was stored.

4. After exiting the user product dialog via *OK*, the added products can be found in the MTpro product hierarchy (see yellow highlighting).



Newly added products can be used just like existing products in MTpro. You can add, move, or even delete additional products at any time by going to *Extras -> User products*.

**Info:** All products are saved in a tab-separated file that can be edited in Excel, e.g. in order to implement comprehensive changes. The "Products.cdb" file is stored in the folder that is specified in step 1. (*Extras -> Options/Directories* under "User products").