

Von  
DC-IA/SPF75

Bearbeiter

Telefon-Durchwahl

Telefax-Durchwahl

Stuttgart-Feuerbach  
24.01.2012

## Memo

Empfänger  
z.K.

### Importing shop floor layouts in Layout Designer

This document describes how to import shop floor layouts in the MTpro Layout Designer.

## Table of contents

Table of contents .....	1
1 Introduction.....	2
2 Requirements .....	3
2.1 File format .....	3
2.2 File layout .....	3
3 Practice.....	4

Von  
DC-IA/SPF75

Bearbeiter

Telefon-Durchwahl

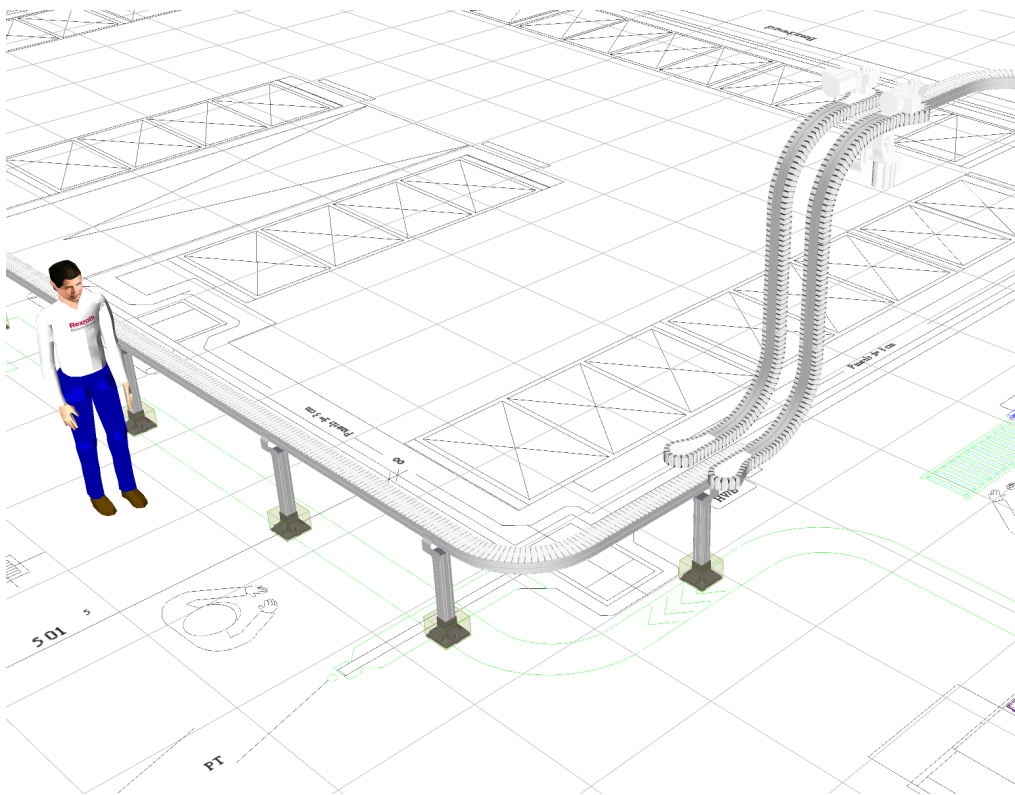
Telefax-Durchwahl

Stuttgart-Feuerbach  
24.01.2012

Memo  
Importing shop floor layouts in Layout Designer

## 1 Introduction

With the MTpro Layout Designer, you are able to import shop floor from CAD drawings in DWG or DXF format.



The imported shop floor layout can be used as an orientation aid during layout creation. In the imported floor layouts, obstacles such as pillars, walls or given machine equipment can be easily considered.

With the help of automated snapping in the Layout Designer both single parts and entire assemblies can be snapped and positioned on existing lines.

Von  
DC-IA/SPF75

Bearbeiter

Telefon-Durchwahl

Telefax-Durchwahl

Stuttgart-Feuerbach  
24.01.2012

Memo

Importing shop floor layouts in Layout Designer

## **2 Requirements**

### **2.1 File format**

The shop floor layout has to be a DWG drawing (AutoCAD drawing format) or a DXF file. Currently it is possible to import DWG drawings up to AutoCAD 2010 drawing format.

### **2.2 File layout**

All elements based on lines and surfaces are visible in Layout Designer. 3D solids and related surface elements will be ignored.

If you use different layers, you are able to show and hide them in the Layout Designer later.

Colours which are assigned to layers will also be used in the Layout Designer.

Von  
DC-IA/SPF75

Bearbeiter

Telefon-Durchwahl

Telefax-Durchwahl

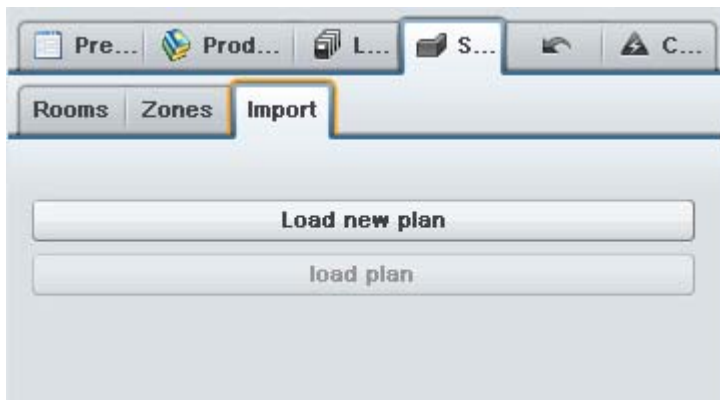
Stuttgart-Feuerbach  
24.01.2012

Memo  
Importing shop floor layouts in Layout Designer

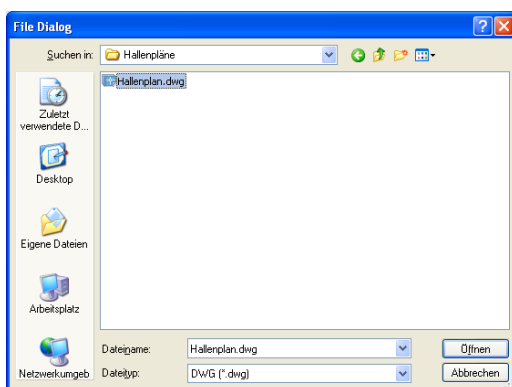
### 3 Practice

The shop floor layout can be imported both in new or existing Layout Designer files.

To import the shop floor layout, please click on the tab “Space configurator”. After that, please click on “Import” and “Load new plan”:



In the dialog, please choose the file you would like to import and click on „Open“:



Von  
DC-IA/SPF75

Bearbeiter

Telefon-Durchwahl

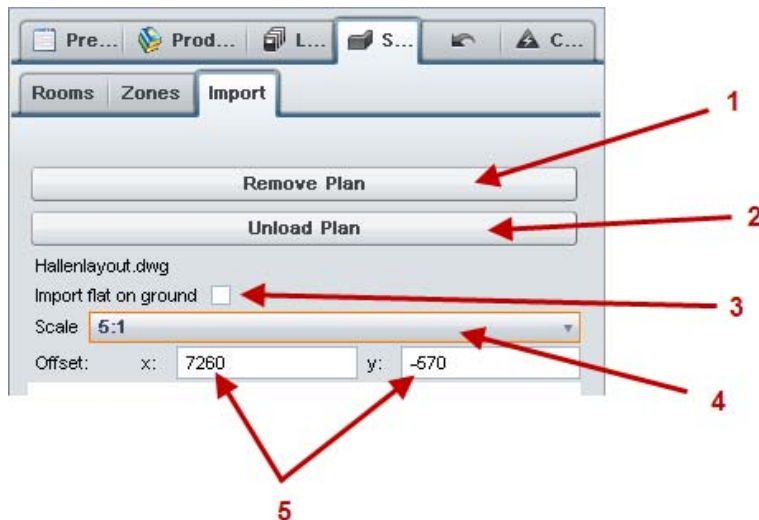
Telefax-Durchwahl

Stuttgart-Feuerbach  
24.01.2012

Memo

Importing shop floor layouts in Layout Designer

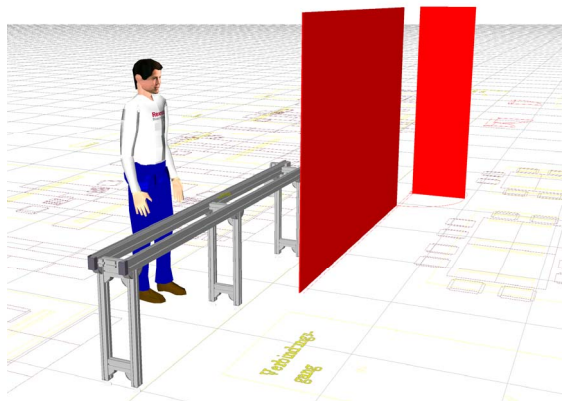
After a successful import there are several options:



1: „Remove plan“ deletes the plan from the layout

2: „Unload plan“ hides the plan temporarily

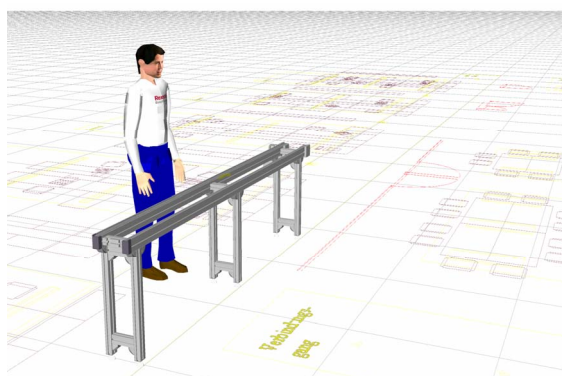
3: If this checkbox is disabled, existing 3D surfaces and lines are shown as three-dimensional objects:



This will help you to improve spatial viewing but also may have some disadvantage during the selection of components.

You are not able to select parts which are below the maximum height of the 3D surfaces.

If the checkbox is enabled, all elements of the shop floor layout will be imported flat on the ground. This will help you to focus on your layout and enables a selection of parts.



Von  
DC-IA/SPF75

Bearbeiter

Telefon-Durchwahl

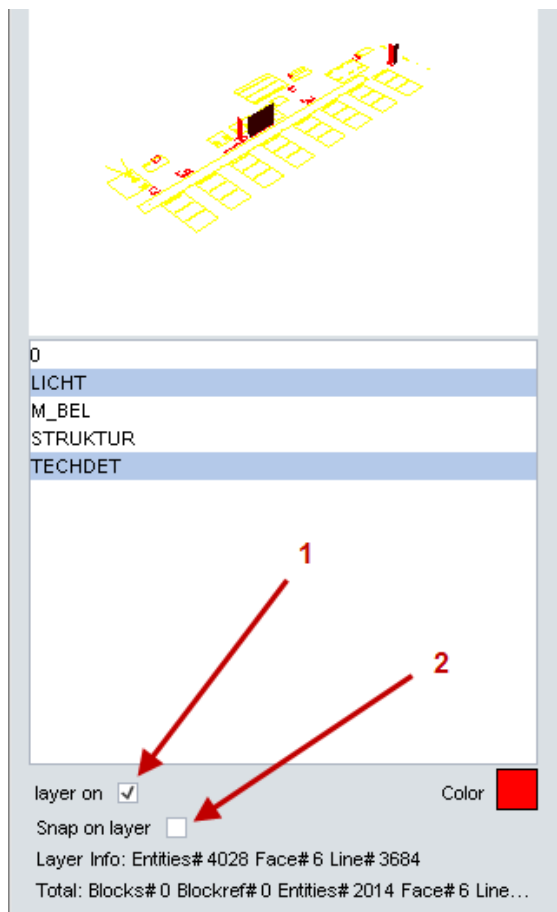
Telefax-Durchwahl

Stuttgart-Feuerbach  
24.01.2012

Memo

Importing shop floor layouts in Layout Designer

- 4: If your CAD drawing is scaled, you are able to apply the inverse scale to obtain the actual size.
- 5: If an offset is defined, the whole drawing will be moved according to the given values.



If your drawing contains layers, you are able to show or hide these layers (1). In addition to that, snapping can be enabled or disabled on each layer individually (2). If snapping on a layer is enabled, Layout Designer parts can be easily aligned with the lines on that layer.