

From  
DC-IA/SPF75

Our Reference

Telephone

Telefax

Stuttgart  
13 March 2012

## Memo

Recipient

Cc

### Show dimensioned drawings of Quick & Easy profiles

This document describes how to create dimensioned drawings of Quick & Easy profiles. This procedure will also work for profiles with standard finishings. The standard profile finishings will be translated into the Quick & Easy description code.

## Table of contents

Table of contents .....	1
1 Introduction.....	2
2 Practice.....	3
3 Automated generation of dimensioned profile drawings from order lists....	5

From  
DC-IA/SPF75

Our Reference

Telephone

Telefax

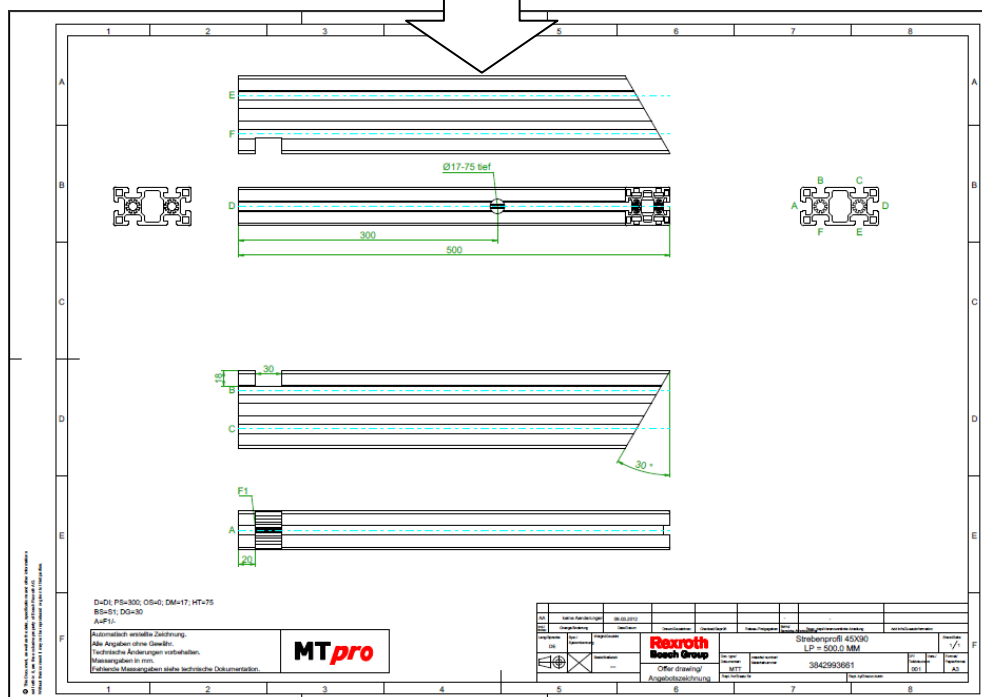
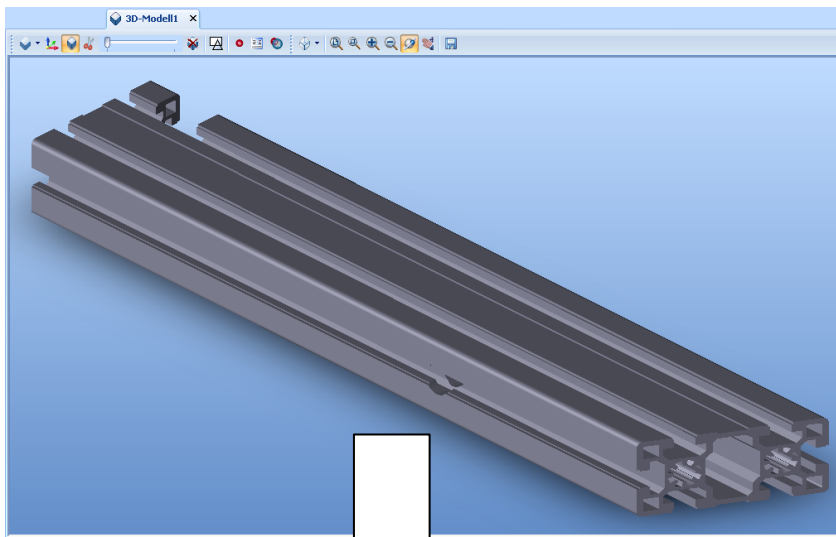
Stuttgart  
13 March 2012

Memo

Show dimensioned drawings of Quick & Easy profiles

## 1 Introduction

With MTpro you are able to create dimensioned drawings of Quick & Easy profiles. A PDF reader and an internet connection are required, because the dimensioned profile drawings are compiled online.



From  
DC-IA/SPF75

Our Reference

Telephone

Telefax

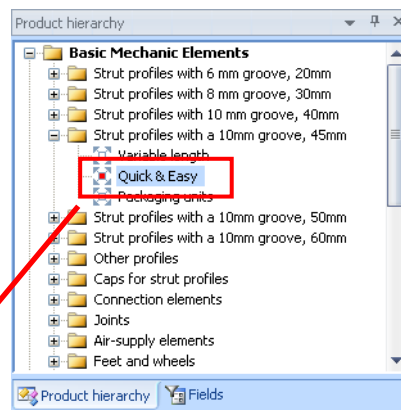
Stuttgart  
13 March 2012

Memo

Show dimensioned drawings of Quick & Easy profiles

## 2 Practice

Select a Quick & Easy profile from the product hierarchy. Open the 3D view with a left click on "Designation".



Article no.	Designation	Parameter
3842993661	STRUT PROFILE 45X90	LP = A5 REQUIRED BY CUSTOMER
3842993662	STRUT PROFILE 45X90L	LP = A5 REQUIRED BY CUSTOMER
3842993676	STRUT PROFILE 90X180	LP = A5 REQUIRED BY CUSTOMER
3842993677	STRUT PROFILE 90X180L	LP = A5 REQUIRED BY CUSTOMER
3842993678	STRUT PROFILE 90X360	LP = A5 REQUIRED BY CUSTOMER
3842993679	STRUT PROFILE 90X90	LP = A5 REQUIRED BY CUSTOMER
3842993680	STRUT PROFILE 90X90L	LP = A5 REQUIRED BY CUSTOMER
3842993681	STRUT PROFILE 90X90SL	LP = A5 REQUIRED BY CUSTOMER

In the properties dialog you are now able to add finishings like bores and millings to the selected profile:

Parameter	
Profile type	45x90
Length LP [mm]	1000
Number of finishes	2
Degree of detail	Detail
Profile finishing	
Type of finishing	Bore sequence
Finish next to groove	D
Diameter [mm]	5.8
Distance from profile front PS	300
Depth HT [mm]	40
Distance between adjacent fi	8.8
Number of finishes SN	5
Profile finishing	
Type of finishing	Cross milling
Finish next to groove	A
Starting point PS [mm]	8

From  
DC-IA/SPF75

Our Reference

Telephone

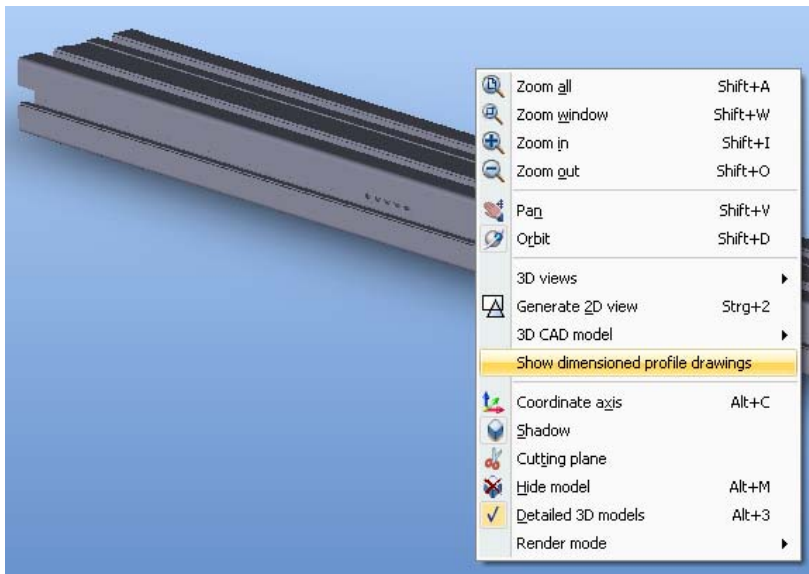
Telefax

Stuttgart  
13 March 2012

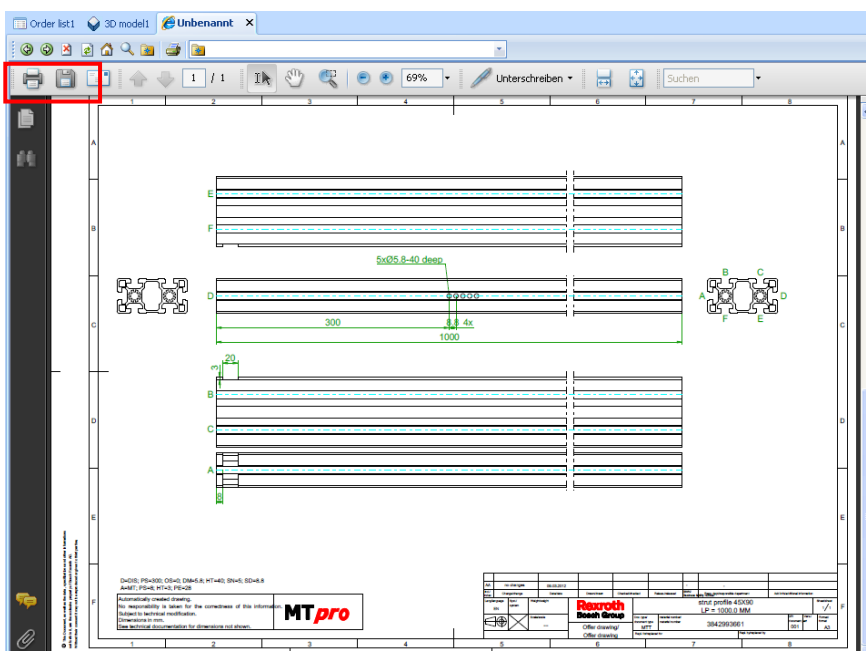
Memo

Show dimensioned drawings of Quick & Easy profiles

With a right click on the 3D-Window you will find the entry „Show dimensioned profile drawings“:



After clicking on „Show dimensioned profile drawings“, a new window with the dimensioned profile drawing will open. You can save the document in PDF-format or print it right from the window:



From  
DC-IA/SPF75

Our Reference

Telephone

Telefax

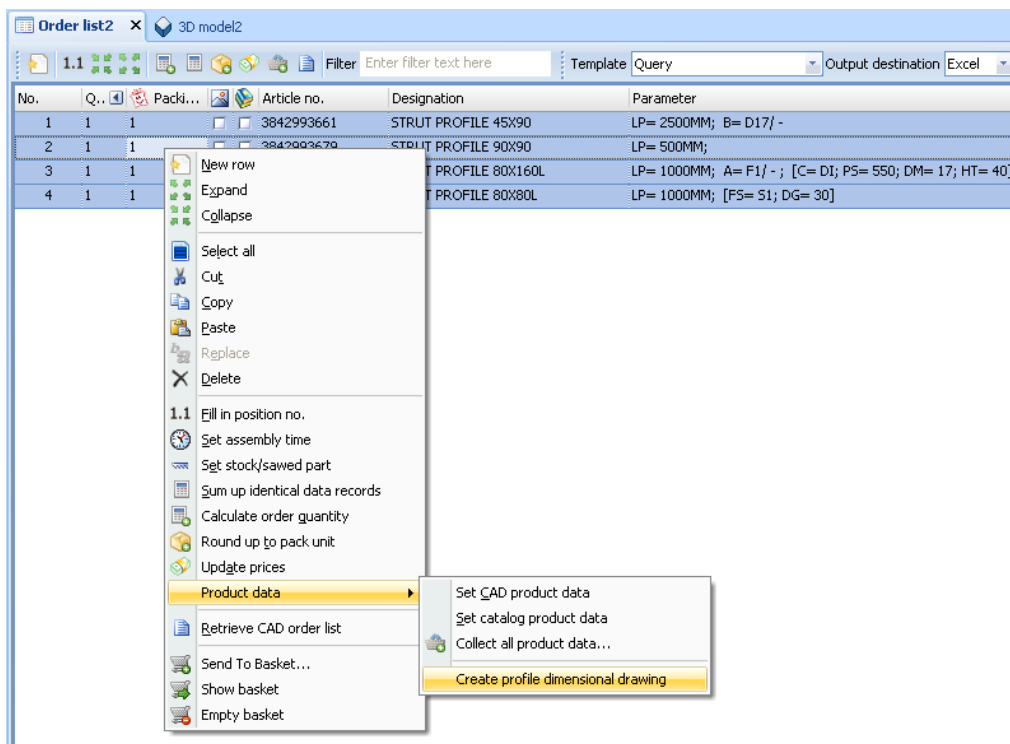
Stuttgart  
13 March 2012

Memo

Show dimensioned drawings of Quick & Easy profiles

### 3 Automated generation of dimensioned profile drawings from order lists

You are able to generate several dimensioned profile drawings at once if they are stored in an MTpro order list. Please select the profiles from which you would like to generate the drawings. After that, please right-click to open the context menu inside the order list and click on “Product data” / “Create profile dimensional drawing”:



From  
DC-IA/SPF75

Our Reference

Telephone

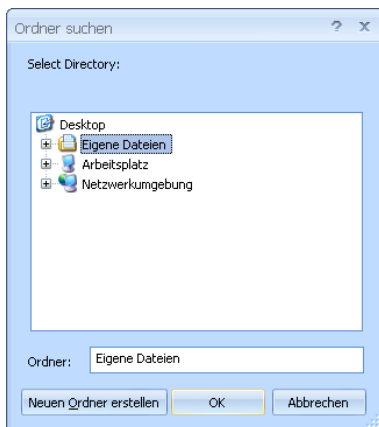
Telefax

Stuttgart  
13 March 2012

Memo

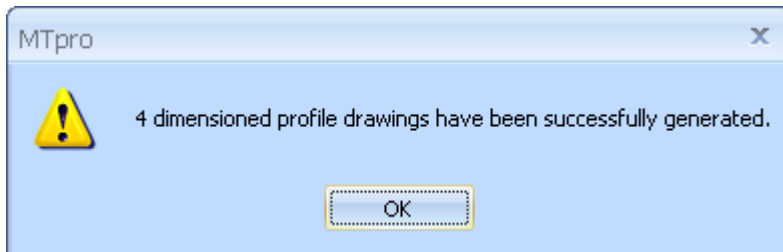
Show dimensioned drawings of Quick & Easy profiles

A window will be shown. You are able to choose the folder where to store the PDF documents:



Click on OK to start the generation. The PDF documents will be created and stored in the folder previously specified. This could take some time, depending on your internet connection and the amount of profiles you selected.

After the generation is done, a message will be displayed:



DC-IA/SPF75