

From  
DC-IA/SPF75

Our Reference

Telephone  
+49 (0)711 / 811 -  
32990

Telefax

Stuttgart  
09 August 2012

## Memo

Recipient  
Cc

### Exporting MTpro parts list data to Autodesk Inventor

This document describes how to export MTpro parts list data into Autodesk Inventor during CAD export using iProperties.

## Table of Contents

---

Table of Contents .....	1
1 Introduction.....	2
2 Requirements .....	3
3 iProperties used in MTpro CAD export.....	4
3.1 Standard iProperties .....	4
3.2 Custom iProperties .....	4
4 Using iProperties in Inventor parts list.....	5

From  
DC-IA/SPF75

Our Reference

Telephone  
+49 (0)711 / 811 -  
32990

Telefax

Stuttgart  
09 August 2012

Memo

Exporting MTpro parts list data to Autodesk Inventor

## 1 Introduction

During CAD export from MTpro into an open Inventor CAD assembly drawing MTpro transfers also parts list data. This parts list data can be shown in the Inventor parts list using iProperties.

No.	Quantity	Article no.	Designation	Parameter	Comments	Weight	Stat. article number
123	1	3842999090	RETURN UNIT UM2	B= 240MM			TS2 84313900
125	1	3842999816	SZ 2 LEG SET	B= 240MM; HSZ= 770MM			TS2 84313900
126	1	3842999816	SZ 2 LEG SET	B= 240MM; HSZ= 770MM			TS2 84313900
124	1	3842999190	AS 2/B-150 DRIVE MO...	B= 240MM; VN= 12M/ MIN; U= 400V; F= 50HZ; AT= K; MA= L; MM= 0°			TS2 84313900
122	1	3842992650	ST 2/B SECTION	L= 1000MM			TS2 84313900
127	1	0842090039	WT 2 WORK-PIECE C...	LWT= 240MM; BWT= 240MM	My comment	2,540 kg	TS2 84662020
123	1	M3842992...	GT 2 BELT	L_M= 1320MM;  L= 2M; _SCL= 1000; _RND= 1; _MAX= 150			TS2 39269097
124	1	M3842992...	GT 2 BELT	L_M= 1320MM;  L= 2M; _SCL= 1000; _RND= 1; _MAX= 150			TS2 39269097
122	1	M3842992...	GT 2 BELT	L_M= 4000MM;  L= 4M; _SCL= 1000; _RND= 1; _MAX= 150			TS2 39269097
125	2	3842345081	FLANGE NUT			8,860 g	TS2 73181650
126	2	3842345081	FLANGE NUT			8,860 g	TS2 73181650
125	2	3842528718	T-BOLT			14,000 g	TS2 73181590
126	2	3842528718	T-BOLT			14,000 g	TS2 73181590

Objekt	MTproPosNo	OrderNo	Beschreibung	Param	Kommentare	MTproPrice	MTproPline
14	122	M3842992811	BELT GT 2	L_M=4000MM   L=4M; _SCL=1000; _RND=1; _MAX=150;		32.40	52
15	123	M3842992811	BELT GT 2	L_M=1320MM   L=2M; _SCL=1000; _RND=1; _MAX=150;		11.34	52
16	124	M3842992811	BELT GT 2	L_M=1320MM   L=2M; _SCL=1000; _RND=1; _MAX=150;		11.34	52
17	125	3842999816	LEG SET SZ 2	B=240MM; HSZ=770MM		156.99	52
18	124	3842999190	DRIVE MODULE AS 2/B-150	B= 240MM; VN= 12M/ MIN; U= 400V; F= 50HZ; AT= K; MA= L   MM= 0°		1727.96	52
19	123	3842999090	RETURN UNIT 2/B	B=240MM		857.84	52
20	122	3842994635	CROSS CONNECTOR QV 2	B=240MM		34.38	52
21	122	3842992650	CONVEYOR SECTION ST 2/B	L=1000MM   B=240MM		146.55	52
22	126	3842528718	T-BOLT	M8x25		0.43	20
23	125	3842526560	ANCHOR BOLT			1.10	20
24	126	3842345081	FLANGE NUT M8			0.13	20
25	126	3842146815	FOUNDATION BRACKET	LE01		8.76	20
26	127	0842090039	WT 2 FULLY ASSEMBLED	LWT=240MM; BWT=240MM	My comment	118.37	52

From  
DC-IA/SPF75

Our Reference

Telephone  
+49 (0)711 / 811 -  
32990

Telefax

Stuttgart  
09 August 2012

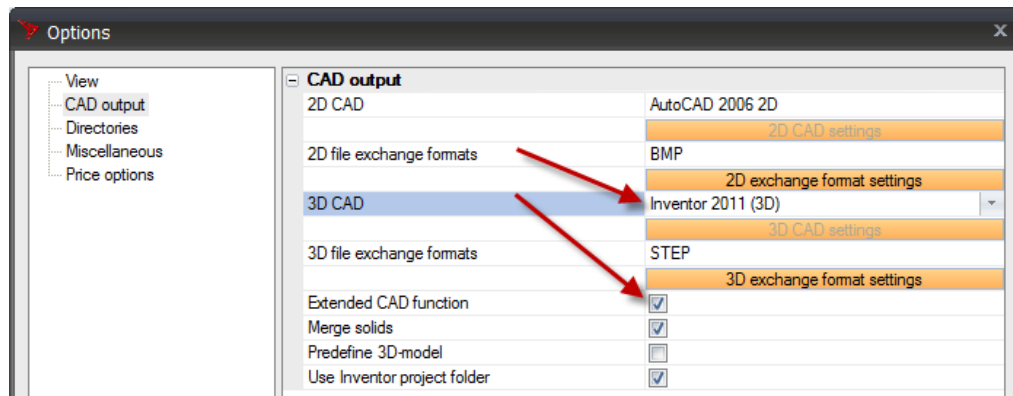
Memo

Exporting MTpro parts list data to Autodesk Inventor

## 2 Requirements

To export parts list data into an Autodesk Inventor drawing there are the following requirements:

- Installed Autodesk Inventor from Version 10
- MTpro Option „3D-CAD“ is set to the installed CAD system version
- MTpro Option „Extended CAD function“ is active



From  
DC-IA/SPF75

Our Reference

Telephone  
+49 (0)711 / 811 -  
32990

Telefax

Stuttgart  
09 August 2012

Memo

Exporting MTpro parts list data to Autodesk Inventor

### **3 iProperties used in MTpro CAD export**

The following iProperties will be predefined in the CAD export of MTpro. They can be shown in Inventor parts list.

#### **3.1 Standard iProperties**

Description	Product designation
Comments	Comments from MTpro order list
Vendor	Constant value „Bosch Rexroth AG - BRL“
WEB Link	Constant value „www.boschrexroth.com/brl“

#### **3.2 Custom iProperties**

OrderNo	Product order number
MTproPosNo	Position number of product from Layout Designer
Param	Order parameter
MTproPrice	Product price for single unit
MTproWeight	Product weight (for non-configurable products)
MTproWeightUnit	Weight unit
MTproPline	Internal product line identifier

From  
DC-IA/SPF75

Our Reference

Telephone  
+49 (0)711 / 811 -  
32990

Telefax

Stuttgart  
09 August 2012

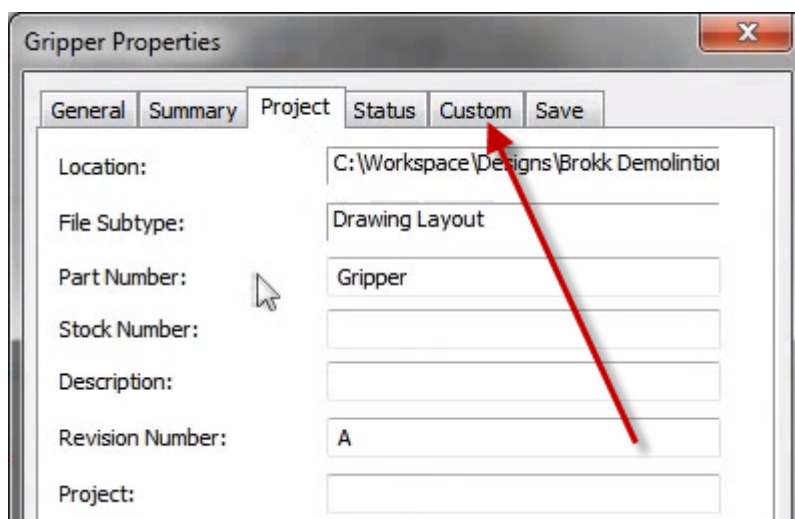
Memo

Exporting MTpro parts list data to Autodesk Inventor

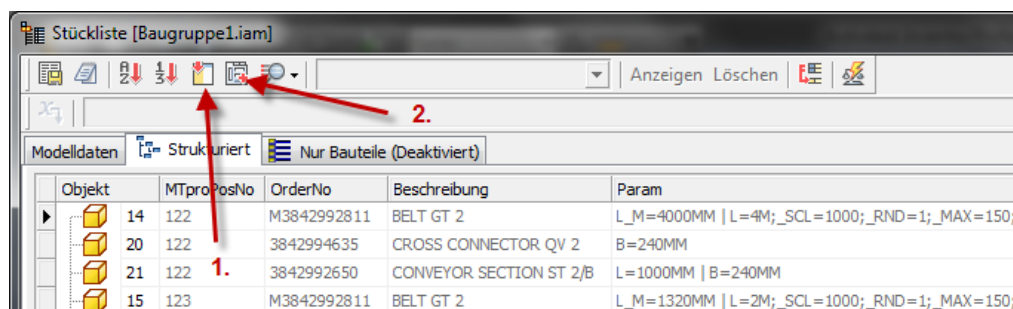
## 4 Using iProperties in Inventor parts list

The iProperties predefined in MTpro can be created and used in Inventor as usual. One potential way is covered below:

- Please open „iProperties“ from the Inventor start menu
- Create custom iProperties in the tab „Custom“:



- Afterwards, open parts list and add the iProperties as new columns. Standard iProperties (1.) and custom iProperties (2.) are added by separate buttons:



DC-IA/SPF75