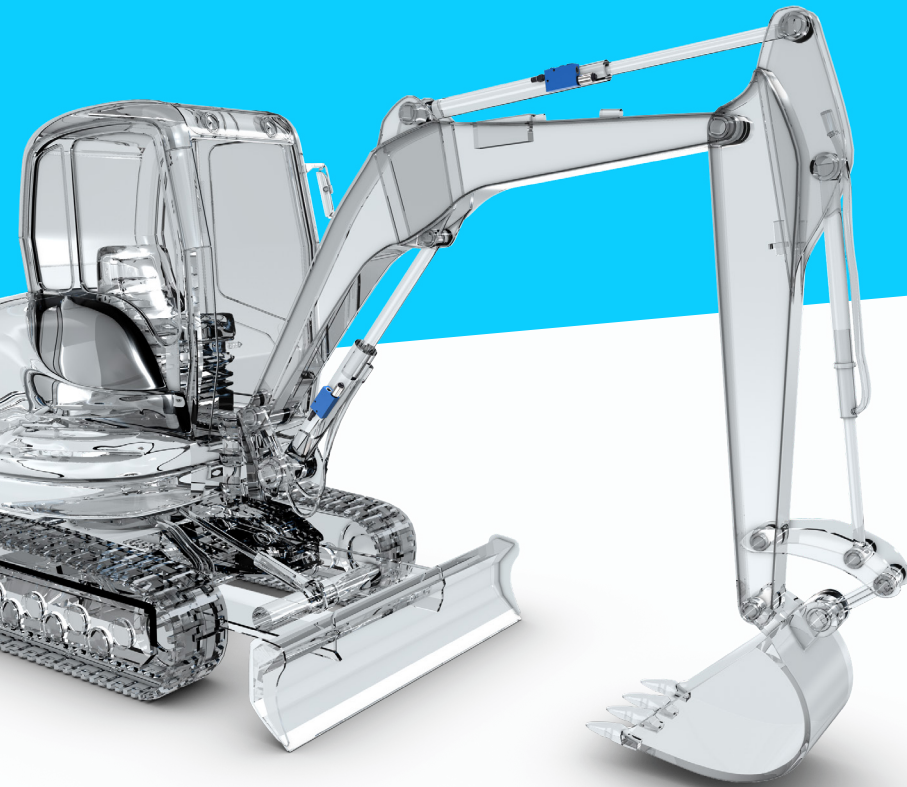


# Flexible and compact, the new check and metering E-valve for midi excavators



## NEW CHECK AND METERING E-VALVE

Bosch Rexroth is expanding its range with the introduction of the new check and metering E-valve for midi excavators. Perfectly suited to 06-ton 10-ton machines, the new valve boasts optimal installation design and, thanks to its electronic control and set-up, offers a very fine movement controllability for a perfect adaptation to all machines. With electronically controlled excavators becoming increasingly sophisticated, the new E-valve fulfils market demands superbly. Using an electro-hydraulic main stage, Bosch Rexroth can provide a more flexible, compact, performing solution and cost effective from the installation point of view by removing pilot and tank piping. Moreover with the special manifold design with symmetrical layout the new solution covers in one version the right and left installation.

Electronic control of the valve makes it possible optimized movements, a configurable setting for a simple adaptation to all machines with improved performance and working cycle time reduction that has not until now been possible with standard products. The resulting valve is a fuel saver solution with a pressure drop reduction of 46% compared to the existing check and metering valve. Furthermore, the new valve provides higher command sensitivity with its very low hysteresis and ensures reduced stress for the actuator limiting the peaks of pressure by using a direct acting relief valve.

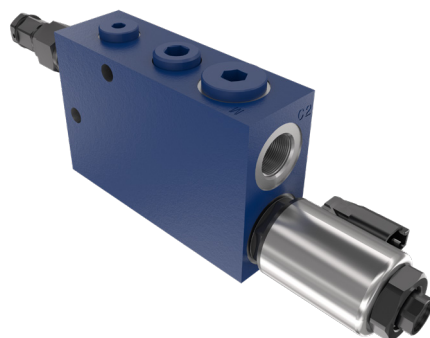
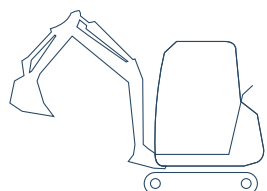
## FUNCTIONS AND CUSTOMER BENEFITS

- Configurable metering
  - » higher flexibility: more than one setting with the same HW
  - » less valve impact
- Higher performance – less pressure drop: fuel saving, less valve impact and fast movements
- Easier valve installation: no pilot & tank piping needed
- Lower valve thickness and symmetrical layout: less installation impact and same valve for right and left installation
- Faster relief response time: less cylinder stress

## TECHNICAL DATA

Flow	Pressure
100 l/min	350 bar

## APPLICATIONS



[compact-hydraulics-pib@boschrexroth.com](mailto:compact-hydraulics-pib@boschrexroth.com)